

Appendices to Section IX
Attachment No. 1

APPENDIX IX-1



MULTI-YEAR FACILITIES PLAN

Tucson Unified School District

Based on the results of the assessments using the FCI and the ESS, the District shall develop a multi-year plan for facilities repairs and improvements

USP IX (A) (1-3)

Contents

I.	DEFINITIONS	3
II.	EXECUTIVE SUMMARY	3
III.	FACILITES FUNDING	4
IV.	IMPLEMENTATION PROCESS	5
V.	PROCESS FLOW	7
VI.	PRIORITIZED LIST OF PROJECTS BASED ON FCI.....	8
I.	PRIORITIZED LIST OF PROJECTS BASED ON ESS.....	10

ATTACHMENT A – FCI VALUE INDEX

ATTACHMENT B – FCI DATA BY SCHOOL

ATTACHMENT C – FCI SORTED BY USP PRIORITIES

ATTACHMENT D – ESS VALUE INDEX

ATTACHMENT E – ESS DATA BY SCHOOL

ATTACHMENT F – ESS SORTED BY USP PRIORITIES

MULTI-YEAR FACILITIES PLAN 2020

I. DEFINITIONS

Multi-Year Facility Plan (MYFP) – A Capital Improvement Program (CIP) derived from the priority needs for major repairs and improvements to be completed by the District based on the FCI and ESS scores. MYFP provides a prioritized list of needed repairs, renovations, and replacements that should be addressed. The repairs will be completed in the order defined by the MYFP, following the guidelines stated in the USP. **Timing will depend on available funds. There is no guarantee that any project listed in the MYFP will be completed. It is dependent upon funding.**

Facility Condition Index (FCI) – Rates the condition of school buildings along multiple structural dimensions and provides a composite score for each school’s condition.

Educational Suitability Score (ESS) - Rates the suitability to provide an equitable education of all facilities that house educational programs, using the seven factors identified by the USP.

Racially Concentrated School (RCS) - A racially concentrated school is any school in which any racial or ethnic group exceeds 70% of the school’s total enrollment, and any other school specifically defined as such by the Special Master in consultation with the Parties.

II. EXECUTIVE SUMMARY

The District utilizes the multi-year facilities plan to select projects, as funds are available. It is based on the results of the assessments using the FCI and ESS.

FCI is a measurement of the condition of a facility at any given time. Low scores are priorities in deciding which projects to seek to address for the MYFP. The composite score is based on a percentage regarding the condition of facility components: grounds (10 percent), parking (5 percent), roofing (20 percent), building structures (30 percent), building systems (20 percent), special systems, (10 percent) and technology/communications systems (5 percent).

ESS is a measurement of the quality or appropriateness of the design of a school for educational purposes. The ESS evaluates: (i) the quality of the grounds, including playgrounds, playfields, and other outdoor areas, and their usability for school-related activities; (ii) library condition; (iii) capacity and utilization of classrooms and other rooms used for school-related activities; (iv) textbooks and other learning resources; (v) existence and quality of special facilities and laboratories (i.e., art, music, band, shop rooms, gymnasium, auditoriums, theaters, science, and language labs); (vi) capacity and use of cafeteria or other eating space(s); and (vii) current fire and safety conditions and asbestos abatement plans.

The ESS has less opportunity for change or affected weathering. Age does not change the appropriateness of a design, so we don't have an expected lifecycle for repairs and eventual replacement. Therefore, the ESS scores are less likely to change unless improvements dollars are allocated and improvements made.

Both the FCI and the ESS are living documents that are updated as improvements to facilities are completed, or as systems are seen to be deteriorating. The data is available on all schools, and the District utilizes these documents to establish and assist in prioritizing the District's Capital Improvement Projects.

The MYFP provides an equitable framework for prioritizing short-term and long-term needs for facilities. The MYFP assigns priorities in the following order: (1) resolution of health and safety issues at any school, (2) schools that score below 2.0 on the FCI or below the District average on the ESS, and (3) racially concentrated schools that score below 2.5 on the FCI. These priorities align with the guidance provided by the USP.

While the Unitary Status Plan requires that the District renew the FCI and the ESS biennially, the District actually updates these two indices on a continual basis. Processes are in place to evaluate conditions any time changes are made to determine a change in score is appropriate. While few changes are made to ESS scores, FCI scores change frequently. Therefore, the biennial update is merely a snapshot of these two tools at the time that the Multi-Year Facility Plan is updated.

III. FACILITIES FUNDING

Typical funding for these projects can come from, but are not limited to, available Capital Funds (610), Outlay or Capital Overrides, School Bonds, Adjacent Ways (Fund 620), and Desegregation Funds. To a lesser degree projects are either partially funded or could be funded from Gifts and Donations, Grants, or SFB (School Facilities Board) Building Renewal Grants. These later three are directed funds from the donor, with no allowance for change or flexibility to choose the recipient building or department. To a lesser degree, both Bonds and Desegregation have limited direction, but require steps for compliance.

This MYFP is dependent on having adequate funding. Without funding, projects cannot be completed. Therefore the MYFP is focused on defining the projects that need to be completed and the order in which they will be addressed. It is not a guarantee that the projects will be completed within the next three years.

- A. Capital Funds** – Fund designated for any capital expenditure including capital overrides. These funds, once placed into Fund 610 are discretionary funds for capital or facilities improvements or repairs, and capital purchases. The state no longer provides capital funds as part of its formula for schools.

- B. School Bonds** - If a district determines that it has needs beyond the capacity of the district's maintenance and operations budget, it may suggest that the board issue a bond. The school board decides whether or not to call a bond election for part or all of the items initially identified by the district staff. The District currently has no outstanding bonds.
- C. Adjacent Way Funds** - Fund designated for expenditures related to the improvement of public ways adjacent to school property.
- D. Desegregation Funds** - These funds are provided pursuant to A.R.S. §15-910(g) through district levy of specific taxes. Funds are used by the district as directed by the Unitary Status Plan, or as otherwise permitted by that statute.
- E. Gifts and Donation** – These Funds (530) consist of donations to the School District. Some are specific, and the donor's request must be followed if the monies are accepted. Others have no direction, and may be used at the District's discretion on how they benefit the school(s).
- F. School Facilities Board (SFB) Monies** - These monies can be used for major renovations and repairs of a building, for upgrades to building systems (e.g. heating, cooling, plumbing, etc.) that will maintain or extend the useful life of a building, and for infrastructure costs. The School Facilities Board distributes building renewal monies in the form of a grant on each project they deem appropriate. These funds are not discretionary, and must be used in accordance with the grant and SFB regulated processes. ARS §15-2002.A.3 requires the SFB to perform preventative maintenance inspections on 20 school districts every 30 months.

IV. IMPLEMENTATION PROCESS

The first priority for major repairs, renovations, and replacements must be facility conditions that impact the health and safety of the District's students and staff. Those items cannot wait for a biennial review. They will be addressed as they occur, or as they are identified as a safety issue, and will always be completed ahead of whatever condition is next on the prioritized list, consistent with the USP.

MYFP provides a prioritized list of needed repairs, renovations, and replacements that should be addressed. The repairs will be completed in the order defined by the MYFP, following the guidelines stated in the USP. Timing will depend on available funds. There is no guarantee that any project listed in the MYFP will be completed. It is dependent upon funding.

The USP language gives priority to schools with an ESS score below the District average. By definition, that would always be roughly half of the schools. Because recommendations were made to have the ESS be similar in process to the FCI, such as making the ESS a weighted system to give priorities to important components, it also makes sense to treat the ESS in the

same manner as the FCI in evaluating school priorities. We are, therefore, using the same threshold of 2.0 for the first priority of schools as we did in the 2019 MYFP. If this is not the intent of the court, the District will adjust the process accordingly.

It is difficult to blend the FCI and ESS list of priorities. The District has kept the lists separate as it did in the 2019 MYFP. They must be budgeted separately.

Priority between FCI and ESS projects

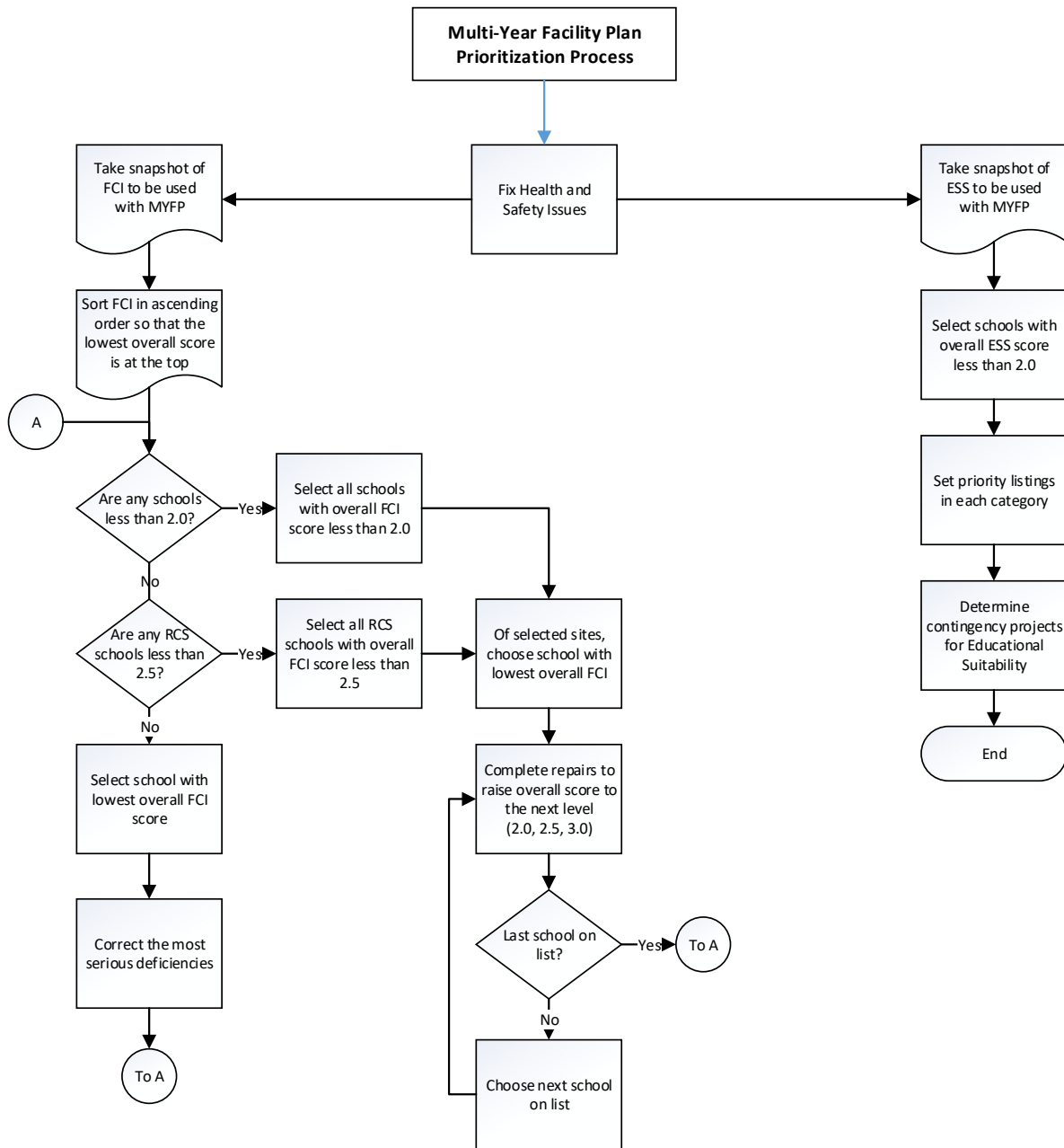
Having appropriate funding is the largest and most important component of the MYFP. The FCI protects the District's ESS investments, keeping both them and the building's students and employees safe, sound and without exposure to the elements. Additionally, ESS and FCI improvements often overlap where some improvements within FCI will be seen in ESS. For this reason the FCI naturally will take priority over the ESS until all overall FCI scores are over 3.0. It is the district's intent to be ready to address ESS issues, although these typically are funded out of contingency funds rather than facilities budgets.

In times when TUSD has limited capital funds, the FCI will take priority, and in times of normal funding, or when School Bonds are approved, the decision tree likely will permit improving both.

Experience has shown that it is difficult to calculate the cost of correcting items such as classrooms that are sized incorrectly, spaces with inappropriate adjacencies, the lack of a variety of teaching and learning spaces, etc. A priority plan was developed for suitability improvements based on the overall suitability score of a particular school and team experience in correcting the overall deficiencies based on that score.

V. PROCESS FLOW

A graphical view of the process is provided below.



This Flowchart is independent of funding. It shows how to prioritize projects.

Actual completion of projects is entirely dependent upon funding. If funds are not available, projects will not be completed.

VI. LIST OF FACILITIES IMPROVEMENT PROJECTS

The following projects were on the District's list of facilities improvement projects to be implemented when funds are available, as of June 30, 2020. Many of these projects were also on the list as of June 30, 2019, and remain on the list because (a) there were no funds to commence them during the SY2019-20, and (b) repair projects with higher priority, or more urgent needs within a priority level, were funded by the SFB during SY2019-20. The list below is not prioritized, because it is unlikely that funds will become available this year for any of these projects. Other emergent repair projects during the 2019-2020 school year will likely take precedence as the school year progresses. Should funds for improvement projects become available, the list will be prioritized based on the current FCI values at the time. Cost estimates, while providing some indication of the general and relative size and scope of projects, are likely out of date.

School	Project	Estimate
Safford	Roofing Renovations	400,000.00 **
	HVAC Upgrades	1,000,000.00 **
	Security Upgrades	125,000.00
	Building Upgrades	1,025,000.00
Hollinger	Building Upgrades	1,400,000.00
	Roofing Renovations	400,000.00 **
	Grounds Improvements	80,000.00
	HVAC Upgrades	185,000.00
	Security Upgrades	125,000.00
Roskrige	Building Upgrades	250,000.00 **
	Roofing Renovations	500,000.00 **
	Grounds Improvements	200,000.00
Cholla	Building Upgrades	165,000.00 **
	Grounds Improvements	350,000.00
	Security Upgrades	250,000.00 **
	Security Upgrades	100,000.00 **
Robison	Roofing Renovations	200,000.00 **
	Security Upgrades	50,000.00 **
	HVAC Upgrades	300,000.00 **
	Building Upgrades	300,000.00
Santa Rita	Security Upgrades	285,000.00
	HVAC Upgrades	1,190,000.00 **
	Roofing Renovations	2,000,000.00 **
	Building Upgrades	75,000.00
2110 Warehouse	Roofing Renovations	110,000.00
	Security Upgrades	150,000.00
	Grounds Improvements	75,000.00
Campbell Warehouse	Roofing Renovations	100,000.00 **
	Security Upgrades	70,000.00

	Grounds Improvements	100,000.00
Sabino	Plumbing Upgrades	250,000.00 **
	Security Upgrades	1,200,000.00
Secrist	HVAC Upgrades	185,000.00 **
	Roofing Renovations	800,000.00 **
	Building Upgrades	100,000.00
	Grounds Improvements	1,100,000.00
	Security Upgrades	100,000.00
Rincon/UHS	HVAC Upgrades	320,000.00 **
	Security Upgrades	400,000.00 **
	Roofing Renovations	1,500,000 **
	Plumbing Upgrades	1,000,000.00
Catalina	Roofing Renovations	1,500,000.00 **
	Security Upgrades	50,000.00
	HVAC Upgrades	50,000 **
	Building Upgrades	100,000.00 **
Wakefield	Roofing Renovations	400,000.00 **
	Building Upgrades	495,000.00 **
	Security Upgrades	450,000.00 **
Starr/TAPP	Building Upgrades	10,000.00 **
	Security Upgrades	250,000.00
Blennman	Roofing Renovations	375,000
Doolen	Roofing Renovations	425,000
Lawerence	Roofing Renovations	345,000
Hughes	Roofing Renovations	400,000
Cragin	Roofing Renovations	375,000
Dunham	Roofing Renovations	375,000
Pistor	Grounds Improvements	300,000
	Roofing Renovations	325,000
Manzo	Roofing Renovations	325,000
	HVAC Upgrades	285,000
Roberts Naylor	Roofing Upgrades	325,000
Vail MS	Roofing Upgrades	350,000
Sewell	Roofing Renovations	300,000
	Special Systems	175,000
Magee	Roofing Renovations	295,000
Mansfeld	Roofing Renovations	275,000
Tucson High	Roofing Renovations	1,875,000

**** Identifies projects currently in design or construction with Arizona State Facilities Board. The FCI score will change when project is completed.**

VII. LIST OF ESS IMPROVEMENT PROJECTS

The list of projects to improve educational suitability below is not prioritized, because it is unlikely that funds will be available this year for any of these projects. Should funding become available, the list will be prioritized based on current ESS values at the time. We have not estimated the cost for these projects. Cost estimates would likely be outdated before funding becomes available. We will move forward with actual estimates if and when we have funding available for these types of projects. The District did not have funds available for any of these projects in SY 2019-20.

<u>School</u>	<u>Project</u>
TAPP	Improve exterior lighting Improve perimeter fencing Improve access control Improve parent drop-off Improve classroom storage Improve technology environment Improve safety of technology devices Improve textbook electronic materials Improve building ventilation and replace/repair noisy heat pumps
Howell	Improve intercom system Improve cafeteria space Improve food service prep area Improve Health Office Improve faculty work space Improve technology in the classroom Improve textbook electronic devices
Pueblo Gardens	Improve perimeter fencing Improve non-instruction clinic space Improve safety of technology devices Improve technology in the classroom Improve performing arts storage Improve physical education hard surfaces
Sewell	Improve access control Improve parent dropoff Improve technology equipment in the buildings Improve technology in the classroom Improve textbook supplemental materials/kits

Warren	<ul style="list-style-type: none"> Improve crosswalk safety Improve Fire Marshall reports for the school Improve administration space Improve classroom storage Improve size of performing arts area
Bloom	<ul style="list-style-type: none"> Improve perimeter fence height Add storage to Performing Arts Add storage to Music
Roberts-Naylor	<ul style="list-style-type: none"> Improve exterior lighting
Palo Verde	<ul style="list-style-type: none"> Improve classroom storage Improve safety of technology devices Improve textbook supplemental materials/kits Improve science classroom storage Install eyewash and showers in science classrooms
Henry	<ul style="list-style-type: none"> Improve parent pick-up area Improve Fire Marshall's Report Provide additional storage for Performing Arts and Music
Gale	<ul style="list-style-type: none"> Improve Food Service prep area Provide technology equipment for lab Provide COWs Improve Instruction resource room Improve textbook electronic materials Improve performing arts storage Improve music environment, size, location, and storage
Robison	<ul style="list-style-type: none"> Improve performing arts storage Improve parent pick-up area
Carillo	<ul style="list-style-type: none"> Improve fence height Improvement placement of exterior signage Provide intercom system and speakers for cafeteria and classrooms Provide technology equipment for the building and classrooms Improve size and condition of library Provide supplemental materials, books, and electronics for library
Myers-Ganoung	<ul style="list-style-type: none"> Provide access control Evaluate and improve placement of exterior signage Improve technology equipment for classrooms Improve library and purchase additional materials

APPENDIX IX-2

FCI Sorted by MYFP Priorities

Rank	School #	School Name	Site Conditions		Building Conditions						FCI	RCS
			Grounds	Parking Lots & Drives	Roofing	Building & Structure	Building Systems	Special Systems	Tech/Comm Systems			
			5%	5%	20%	30%	20%	5%	15%	100%		
1	535	SAFFORD	3.30	3.00	1.00	2.33	2.05	3.67	2.50	2.18	*	
2	233	HOLLINGER	3.73	2.00	1.00	2.71	2.33	3.33	2.50	2.31	*	
3	595	ROSKRUGE	2.70	3.00	1.00	2.83	2.23	4.33	2.50	2.37	*	
4	615	CHOLLA HS	2.53	3.00	1.50	2.67	2.55	1.75	3.00	2.42	*	
5	353	ROBISON ES	4.30	2.00	1.25	2.63	2.58	2.50	3.00	2.44	*	
6	655	SANTA RITA HS	3.13	2.00	1.25	2.75	1.65	2.00	2.50	2.14		
7	19D	WAREHOUSE-2110 Winsett	3.00	1.00	1.00	2.67	2.45	2.00	2.50	2.17		
8	20D	WAREHOUSE-480 Campbell	3.00	2.00	1.00	2.00	2.45	2.00	4.00	2.24		
9	645	SABINO HS	2.53	2.00	5.00	2.75	2.15	2.33	3.00	3.05		
10	537	SECRIST MS	2.20	2.00	1.50	2.50	2.48	2.75	2.50	2.27		
11	640/675	RINCON HS/UHS	3.28	2.00	1.50	2.85	1.60	1.67	3.00	2.27		
12	610	CATALINA HS	3.03	3.00	1.50	2.58	2.00	2.75	2.50	2.29		
13	560	WAKEFIELD	3.10	3.00	1.00	2.54	2.77	1.25	3.00	2.33		
14	13D	STARR CENTER (TAPP)	2.80	3.00	1.00	3.00	2.05	3.33	2.50	2.34		
15	01D	AJO WAY SER CTR (PFCI)	2.73	3.00	3.00	2.00	2.05	2.00	2.50	2.37		
16	125	BLENNAN ES	3.85	2.00	1.25	2.63	2.50	3.33	2.50	2.37		
17	505	DOOLEN MS	3.90	3.00	1.00	2.88	2.65	1.25	2.50	2.38		
18	211	DUNHAM ES	3.10	2.00	1.50	3.00	2.00	2.33	3.00	2.42		
19	17D	WAREHOUSE-1940 Winsett	3.00	1.00	1.00	2.80	2.45	2.00	4.00	2.43		
20	511	GRIDLEY MS	2.68	3.00	1.00	2.75	2.68	3.08	3.00	2.45		
21	257	HUGHES ES	3.50	3.00	1.00	2.69	2.75	2.33	3.00	2.45		
22	197	DIETZ	2.71	3.00	2.00	2.75	2.00	2.50	3.00	2.49		
23	510	BOOTH-FICKETT	3.10	3.00	1.00	3.00	2.90	1.25	3.00	2.50		
24	277	LAWRENCE (3-8)	2.60	3.00	1.25	2.89	2.53	3.00	3.00	2.50		
25	620	PALO VERDE HS	3.08	2.00	2.50	2.85	2.15	2.08	2.50	2.52		
26	09D	MORROW ED CTR	2.05	3.00	2.00	2.72	2.08	4.00	3.00	2.53		
27	676	TEENAGE PARENT PROG (STARR)	2.53	3.00	5.00	3.00	2.25	2.67	2.50	3.13		
28	179	CRAGIN ES	3.81	2.00	1.50	3.00	2.40	2.83	3.00	2.56		
29	660	TUCSON HS	3.58	3.00	1.75	2.67	2.85	1.33	3.00	2.57	*	
30	520	MANSFELD MS	2.63	3.00	1.75	2.68	2.73	2.83	3.00	2.57		
31	395	SEWELL ES	3.78	4.00	1.75	2.88	2.35	1.25	3.00	2.58		
32	515	MAGEE MS	3.50	3.00	1.50	2.89	2.55	2.75	3.00	2.59		
33	527	PISTOR MS	3.73	1.00	1.75	3.11	2.48	2.50	3.00	2.59	*	
34	167	CAVETT ES	3.50	3.00	2.00	2.94	2.35	2.83	2.50	2.60	*	
35	520	DUFFY SERVICE CENTER	3.00	2.00	3.00	2.60	2.35	2.50	2.50	2.60		
36	293	MANZO ES	3.65	2.00	1.50	2.70	2.55	5.00	3.00	2.60	*	
37	650	SAHUARO HS	3.73	3.00	2.00	2.85	2.23	2.33	3.00	2.60		
38	12D	ROSEMONT SER CTR (PFCI)	3.00	2.00	3.00	2.06	2.05	2.50	4.00	2.60		
39	215	ERICKSON ES	2.95	3.00	2.00	2.91	2.35	2.33	3.00	2.61		
40	231	GRIJALVA ES	4.05	3.00	2.00	2.94	1.80	3.75	3.00	2.63	*	
41	311	MISSION VIEW ES	4.29	3.00	2.00	2.88	2.23	2.50	3.00	2.65	*	
42	555	VAIL MS	2.83	2.00	1.50	3.00	3.18	2.42	3.00	2.65		
43		DIRECT LINK	3.00	3.00	2.00	2.36	2.20	4.00	4.00	2.65		
44	305	MILES	4.01	3.00	2.00	2.91	2.30	2.37	3.00	2.65		
45	525	ROBERTS-NAYLOR	2.30	3.00	1.25	2.89	3.48	2.50	3.00	2.65		
46	228	GALE ES	3.70	3.00	2.00	2.94	2.35	2.33	3.00	2.66		
47	323	OCHOA ES	4.34	3.00	2.00	2.67	3.03	1.25	3.00	2.68	*	
48	550	UTTERBACK MS	2.93	2.00	2.00	3.00	3.00	1.83	3.00	2.69	*	
49	218	FORD ES	2.34	3.00	2.50	2.83	2.20	3.75	3.00	2.69		
50	06D	FINANCE BUILDING	2.70	3.00	2.50	2.88	2.05	1.00	4.00	2.71		
51	07D	FOOD SERVICES	3.05	3.00	2.50	3.00	2.83	1.50	2.50	2.72		
52	225	FRUCHTHENDLER ES	2.65	3.00	2.00	3.00	2.73	2.83	3.00	2.72		
53	673	FINE ARTS (PFCI)	3.00	3.00	3.00	3.00	1.85	3.50	2.50	2.72		
54	191	DAVIS ES	3.80	3.00	2.00	2.59	2.63	1.75	4.00	2.73		
55	449	WHITE ES	3.76	3.00	2.50	3.00	2.15	2.50	3.00	2.74	*	
56	290	MALDONADO ES	1.95	3.00	3.00	2.94	2.10	3.08	3.00	2.76	*	
57	281	LINeweaver ES	3.26	2.00	2.00	2.88	2.75	4.67	3.00	2.76		
58	238	HENRY ES	3.75	3.00	2.50	2.75	2.73	2.50	3.00	2.78		
59	251	HUDLOW ES	3.01	3.00	2.00	3.00	1.75	4.67	4.00	2.78		
60	443	WHEELER ES	3.36	2.00	2.00	2.88	2.73	2.17	4.00	2.78		
61	389	SCHUMAKER	2.51	2.00	2.50	3.00	2.80	3.50	3.00	2.81		
62	15D	TRANSPORTATION EAST	3.05	5.00	3.00	2.00	2.05	4.00	4.00	2.81		
63	461	WRIGHT ES	2.75	3.00	3.00	2.83	2.53	2.50	3.00	2.82		
64	239	HOLLADAY ES	3.80	3.00	2.50	2.82	2.73	4.33	2.50	2.82		
65	131	BONILLAS ES	4.10	2.00	3.00	2.61	2.50	3.75	3.00	2.83		

FCI Sorted by MYFP Priorities

Rank	School #		Site Conditions		Building Conditions						FCI	RCS
			Grounds	Parking Lots & Drives	Roofing	Building & Structure	Building Systems	Special Systems	Tech/Comm Systems			
66	245	HOWELL ES	3.06	3.00	2.50	2.67	2.70	1.75	4.00	2.83		
67	08E	CARPENTERS HALL	2.83	2.00	2.00	2.88	2.23	3.00	5.00	2.85		
68	674	PROJECT MORE HS	2.93	3.00	3.00	3.14	2.80	1.67	2.50	2.86		
69	435	VESEY ES	3.60	2.00	3.00	2.88	2.38	3.83	3.00	2.86	*	
70	371	ROSE	3.55	2.00	2.50	2.94	2.68	4.33	3.00	2.86	*	
71		FACILITIES (PFCI)	2.85	4.00	3.50	3.13	1.80	3.00	2.50	2.87		
72	02D	CAMP COOPER	3.03	3.00	3.00	2.00	2.60	2.00	5.00	2.87		
73	16D	TRANSPORTATION CENTRAL	3.05	4.00	1.50	3.13	2.25	5.00	4.00	2.89		
74	678	SOUTHWEST ED. CTR (678)	2.78	3.00	1.00	3.00	2.65	4.50	5.00	2.89		
75	440	WARREN ES	1.95	3.00	4.00	2.94	2.00	2.50	3.00	2.91	*	
76		FACILITIES WAREHOUSE	3.00	4.00	3.00	3.00	2.05	4.00	3.00	2.91		
77	287	LYNN/JURQUIDES ES	3.50	3.00	2.50	3.06	2.55	4.33	3.00	2.92	*	
78	275	KELLOND ES	3.84	3.00	2.50	2.75	2.50	4.67	3.50	2.93		
79	413	STEELE ES	2.70	3.00	3.00	3.13	2.75	2.33	3.00	2.94		
80	149	BRICHTA	2.93	2.00	2.50	2.72	2.93	4.33	4.00	2.96		
81	351	ROBINS	3.14	3.00	3.00	3.45	2.05	3.42	3.00	2.97	*	
82	11D	PROPERTY CONTROL (PFCI)	2.90	4.00	4.00	3.17	2.05	2.00	2.50	2.98		
83	03D	RISK MANAGEMENT (CHAP. II)	3.00	3.00	3.00	3.00	2.05	3.50	4.00	2.99		
84	170	COLLIER ES	2.55	3.00	4.00	2.75	2.00	4.67	3.00	2.99		
85	419	TULLY ES	2.35	3.00	5.00	2.69	2.00	1.25	3.00	2.99		
86	417	TOLSON ES	2.89	3.00	2.00	3.00	4.10	2.50	3.00	2.99	*	
87	18D	WAREHOUSE-2050 Winsett	3.05	4.00	5.00	2.25	2.45	2.00	2.50	2.99		
88	630	PUEBLO HS	3.48	3.00	4.00	2.95	2.65	1.83	2.50	3.01	*	
89	410	SOLENG TOM ES	3.05	1.00	4.50	2.94	2.55	1.25	3.00	3.01		
90	578	DRAKE ALTER MS	3.05	3.00	3.00	2.67	2.60	4.00	4.00	3.02		
91	143	BORTON ES	4.09	2.00	3.00	2.91	3.28	4.33	2.50	3.02		
92	140	BORMAN ES	4.25	3.00	3.00	2.88	2.70	1.75	4.00	3.05		
93	317	MYERS/GANOUNG ES	3.10	1.00	5.00	2.82	2.05	3.42	3.00	3.08		
94	203	DRACHMAN	2.95	3.00	2.50	3.17	2.75	3.75	4.00	3.09		
95	308	MILLER ES	2.58	1.00	5.00	2.88	2.10	4.00	3.00	3.11	*	
96	10D	MORROW ED CTR ANNEX	2.95	3.00	3.00	3.00	2.65	3.00	4.50	3.15		
97	128	BLOOM ES	2.78	3.00	4.00	3.13	2.45	3.75	3.00	3.15		
98	557	VALENCIA MS	3.45	3.00	3.00	3.11	3.80	3.33	2.50	3.16	*	
99	266	JOHNSON PRIMARY ES	4.70	3.00	3.00	2.83	3.00	2.50	4.00	3.16		
100	455	WHITMORE ES	2.45	3.00	3.50	3.00	2.53	3.75	4.00	3.17		
101	161	CARRILLO ES	4.00	3.00	5.00	2.27	2.35	5.00	3.00	3.20	*	
102	502	DODGE MS	3.45	4.00	4.00	2.67	2.55	2.75	4.00	3.22		
103	08D	LIRC	3.00	4.00	3.00	3.00	2.65	3.00	5.00	3.28		
104	329	PUEBLO GARDENS	3.30	5.00	5.00	2.63	2.00	4.67	3.00	3.29	*	
105	327	OYAMA ES	3.60	3.00	3.50	3.22	2.45	4.33	4.00	3.30	*	
106	431	VAN BUSKIRK ES	2.73	3.00	5.00	2.91	2.75	3.42	3.00	3.33	*	
107	295	MARSHALL ES	3.31	3.00	4.00	3.25	2.75	5.00	3.00	3.34		
108	521	MORGAN MAXWELL	4.20	3.00	5.00	2.85	2.85	2.50	3.00	3.36	*	
109	074	CHERRY FIELD (##TUCSON HS)	4.08	3.00	3.00	3.11	3.75	3.00	4.00	3.39		
110	120	BANKS ES	4.30	3.00	3.50	3.11	2.85	4.67	4.00	3.40		
111	185	DAVIDSON ES	4.01	3.00	3.50	3.33	3.38	3.67	4.00	3.51		
112	195	MARY MEREDITH K-12	2.80	3.00	3.50	3.13	4.00	4.00	5.00	3.68		
113	523	McCORKLE	4.65	4.00	4.00	3.70	4.00	5.00	3.00	3.84	*	
114		TRANSPORTATION WEST	3.28	5.00	5.00	5.00	4.80	5.00	5.00	4.87		

APPENDIX IX-5

Educational Suitability Score - Sorted per USP Priorities

	Security Support-ike	Non-Instruct Space	Early Childhood Classroom	Kindergarten Classroom	General Classroom	Technology	Instruction Resource Room	ES/EL S/EL Contained	Library Media Center	Textbooks / Learning Resources	Science Classroom	Performing Arts	Music	Visual Art	Physical Education	ESS Weighted Score
	8.0%	2.0%	4.5%	4.0%	17.0%	8.0%	7.0%	8.5%	8.0%	9.0%	8.0%	4.0%	4.0%	4.0%	4.0%	
TEENAGE PARENT PROG	2.9	2.6	No Data	No Data	3.0	3.9	No Data	No Data	2.5	3.0	3.0	No Data	No Data	No Data	No Data	3.01
HOWELL ES	3.2	2.6	3.0	3.0	3.0	3.4	3.0	3.0	3.0	2.8	3.0	3.0	3.0	3.0	3.0	3.02
PUEBLO GARDENS	3.4	2.9	3.0	3.0	3.0	3.1	3.0	No Data	3.0	3.0	3.0	2.8	3.5	3.0	2.9	3.05
SEWELL ES	3.7	3.8	No Data	3.0	3.0	3.6	3.0	3.3	3.0	2.8	3.0	3.0	3.0	3.0	3.0	3.12
WARREN ES	3.3	2.8	3.3	3.3	2.8	4.0	3.0	3.0	3.3	3.0	3.0	2.8	3.5	3.3	3.1	3.13
BLOOM ES	3.4	3.0	3.0	3.0	3.0	4.4	3.3	3.3	3.0	3.0	3.0	2.5	2.8	3.0	3.0	3.15
ROBERTS-NAYLOR	3.3	3.4	No Data	3.0	3.0	4.1	3.0	3.0	3.0	3.0	3.0	3.0	3.8	3.0	3.0	3.16
PALO VERDE MAGNET HS	3.5	3.2	No Data	No Data	2.8	4.0	3.3	3.0	4.0	3.0	2.6	3.0	3.5	3.3	3.0	3.19
HENRY ES	3.2	3.0	No Data	3.0	3.0	4.4	4.0	3.0	3.0	3.3	3.0	2.8	2.5	3.0	3.0	3.20
GALE ES	3.3	2.9	3.5	4.0	3.0	4.1	2.8	No Data	3.8	3.3	3.0	2.8	2.0	3.0	3.1	3.21
ROBISON ES	3.3	3.3	No Data	3.0	3.0	4.6	3.0	3.0	3.0	3.3	3.0	3.0	3.8	3.0	3.1	3.23
CARRILLO ES	3.8	4.1	No Data	3.3	3.0	3.9	3.5	No Data	2.5	2.0	3.0	3.8	3.8	4.0	3.2	3.23
MYERS/GANOUNG ES	3.3	3.4	4.0	4.0	3.0	3.7	3.0	4.0	2.8	2.8	3.4	3.0	3.0	3.0	3.0	3.25
CHOLLA MAGNET HS	4.0	3.2	No Data	No Data	3.0	3.7	3.5	3.3	3.8	3.0	2.2	3.8	3.3	2.5	3.6	3.26
CRAGIN ES	3.5	3.0	3.0	3.0	3.5	4.3	3.3	3.0	3.0	3.3	3.0	3.0	3.0	3.0	3.0	3.26
PROJECT MORE HS	3.4	2.9	No Data	No Data	3.0	3.9	3.5	No Data	3.5	3.3	3.0	No Data	No Data	No Data	3.0	3.27
WHEELER ES	3.3	3.3	3.0	3.0	3.3	4.4	3.0	3.0	3.5	3.5	3.0	3.0	3.0	3.0	3.1	3.28
UTTERBACK MAGNET MS	3.2	3.4	No Data	No Data	3.0	3.9	3.0	2.8	3.5	3.3	3.2	4.0	4.0	3.3	3.3	3.29
DAVIS MAGNET ES	3.5	3.4	No Data	4.0	3.3	3.7	2.8	No Data	3.3	3.3	3.0	3.0	3.0	3.8	3.0	3.29
GRIDLEY MS	3.4	3.2	No Data	No Data	3.0	4.0	3.0	3.0	3.8	3.0	3.6	3.0	4.0	3.0	3.1	3.30
KELLOND ES	3.4	3.1	No Data	3.0	3.0	4.1	3.3	3.0	3.0	3.5	3.0	3.8	4.8	3.0	3.0	3.30
SABINO HS	3.3	3.3	No Data	No Data	3.0	4.0	3.0	No Data	3.3	3.3	3.4	3.8	3.3	3.5	3.0	3.30
MALDONADO ES	3.5	3.6	4.0	3.8	3.0	4.1	3.5	No Data	4.5	3.3	3.0	3.0	2.0	2.5	3.0	3.36
DUNHAM ES	3.6	3.6	3.3	3.3	3.0	3.9	3.0	No Data	3.5	3.3	3.6	No Data	3.0	No Data	4.1	3.38
MILLER ES	3.4	3.8	3.8	4.0	3.0	4.3	3.3	3.5	3.8	3.5	3.0	3.0	3.0	3.0	3.1	3.39
SANTA RITA HS	3.7	3.9	No Data	No Data	2.8	3.9	3.5	3.0	3.3	3.0	4.0	4.0	4.0	3.5	3.6	3.40
MAGEE MS	3.7	3.2	No Data	No Data	3.0	4.1	3.0	3.5	3.8	3.0	3.4	3.8	3.8	No Data	3.3	3.41
SAHUARO HS	3.8	3.7	No Data	No Data	2.8	3.6	3.3	3.3	3.3	2.8	3.4	4.8	4.8	3.5	4.3	3.42
WHITE ES	3.9	3.9	No Data	4.3	3.8	3.9	2.8	3.0	3.8	2.5	3.6	3.0	3.0	3.0	3.8	3.43
TOLSON ES	3.5	3.1	3.3	3.3	3.3	4.0	3.3	No Data	4.5	3.8	3.0	3.3	2.8	3.8	3.3	3.47
DODGE MAGNET MS	3.8	3.3	No Data	No Data	3.5	4.0	3.3	No Data	3.5	4.0	3.0	3.0	3.8	No Data	3.1	3.52
MARSHALL ES	4.2	3.9	3.8	3.8	3.8	4.0	3.0	3.8	4.0	3.3	3.0	3.0	3.0	3.0	3.4	3.56
TULLY MAGNET ES	4.3	4.0	5.0	4.0	3.8	3.1	4.8	No Data	4.0	3.5	1.6	3.0	3.0	3.0	3.4	3.60
ERICKSON ES	3.6	3.6	4.0	4.0	4.0	4.6	3.0	4.0	3.0	3.0	3.8	3.0	3.0	3.0	3.2	3.60
LAWRENCE ES	3.5	4.4	No Data	No Data	3.8	4.3	4.0	No Data	4.0	2.8	3.0	No Data	3.5	No Data	3.1	3.62
ROSKRUGE MAGNET	3.9	2.8	No Data	5.0	4.3	4.6	2.8	2.8	4.5	4.0	3.2	3.3	3.0	3.0	1.9	3.66
VAIL MS	3.3	3.4	No Data	No Data	4.0	3.6	3.0	3.8	5.0	3.0	3.4	4.3	4.0	3.8	3.9	3.72
MANZO ES	4.2	3.6	4.0	4.0	3.0	3.9	5.0	4.0	4.0	3.5	5.0	3.0	3.0	3.0	3.6	3.79
MISSION VIEW ES	3.9	3.6	4.0	4.0	4.0	4.1	5.0	4.0	3.3	4.0	2.8	3.8	3.0	4.0	3.1	3.83
PISTOR MS	3.2	3.9	No Data	No Data	3.0	3.9	4.8	4.0	5.0	3.8	4.8	4.3	4.3	3.8	3.8	3.93
MARY MEREDITH K-12	4.0	4.6	No Data	No Data	4.8	4.0	3.0	5.0	4.8	3.8	2.2	No Data	No Data	No Data	2.2	3.94
BONILLAS MAGNET ES	4.1	4.0	No Data	4.3	4.0	4.1	5.0	4.0	4.5	3.0	4.2	4.0	4.0	4.0	4.0	4.07
HOLLADAY ES	3.8	2.6	No Data	5.0	4.8	4.7	3.8	4.3	4.0	4.3	5.0	2.8	4.0	4.5	4.1	4.27
DOOLEN MS	3.5	4.7	No Data	No Data	4.8	4.1	5.0	5.0	5.0	2.5	3.8	4.3	4.8	4.5	4.0	4.28
HUDLOW ES	3.9	4.0	5.0	5.0	5.0	4.4	4.0	5.0	3.5	3.8	5.0	3.0	3.0	3.0	4.7	4.29
SECRIST MS	2.6	4.7	No Data	No Data	4.8	2.9	4.8	4.3	5.0	4.5	4.6	4.3	5.0	5.0	4.3	4.32
CATALINA MAGNET HS	4.0	4.8	No Data	No Data	3.5	3.1	4.3	4.5	4.8	5.0	4.8	5.0	5.0	4.5	5.0	4.32
PUEBLO MAGNET HS	4.4	4.7	No Data	No Data	5.0	3.6	No Data	4.8	5.0	2.0	4.8	3.5	5.0	5.0	4.2	4.32
RINCON/UNIVERSITY HS	3.6	4.2	No Data	No Data	4.3	3.7	4.3	4.8	5.0	4.3	4.0	4.8	4.8	4.8	4.9	4.34
BLENNAN ES	3.2	4.2	5.0	4.5	4.8	3.9	4.8	No Data	5.0	4.0	3.4	4.3	4.8	4.8	5.0	4.35
HOLLINGER	3.6	4.8	5.0	5.0	5.0	4.1	4.3	4.8	5.0	2.0	5.0	4.5	4.3	5.0	3.6	4.37
OYAMA ES	3.6	4.4	No Data	4.8	5.0	4.4	5.0	5.0	5.0	1.8	4.5	5.0	5.0	5.0	1.8	4.39
DRACHMAN ES	4.3	4.9	No Data	5.0	4.5	4.3	5.0	5.0	5.0	3.8	5.0	1.0	4.5	No Data	3.6	4.39
LINWEAVER ES	3.8	3.6	No Data	5.0	4.8	4.3	4.8	4.5	5.0	4.0	5.0	3.5	3.5	3.8	4.7	4.42
HUGHES ES	3.8	4.1	No Data	4.5	5.0	4.1	2.5	No Data	4.8	4.3	4.8	5.0	4.8	4.8	5.0	4.42
SAFFORD MAGNET	4.1	5.0	No Data	4.5	4.5	4.7	4.5	4.8	4.8	3.5	4.6	4.5	4.3	4.5	4.4	4.44
SOLENG TOM ES	4.5	4.7	4.8	5.0	No Data	4.0	4.5	No Data	4.5	4.0	5.0	4.0	4.3	No Data	4.4	4.45
GRIJALVA ES	4.2	4.0	5.0	5.0	5.0	4.6	5.0	No Data	5.0	4.0	4.8	3.3	3.0	3.0	4.1	4.45
BOOTH-FICKETT	4.3	4.7	No Data	4.8	4.8	4.0	5.0	5.0	4.8	3.5	3.6	5.0	5.0	No Data	4.4	4.47
BORTON ES	3.8	4.3	2.3	4.3	5.0	4.1	5.0	No Data	5.0	5.0	4.6	4.5	4.3	3.8	4.9	4.48
OCHOA ES	3.6	4.5	5.0	5.0	5.0	4.0	5.0	No Data	4.3	4.0	5.0	2.5	5.0	5.0	4.4	4.48
VESEY ES	4.1	4.2	No Data	5.0	5.0	4.3	4.8	No Data	5.0	4.3	2.6	4.5	5.0	5.0	4.8	4.49
MILES ELC (K-8)	4.1	4.4	5.0	4.3	5.0	3.4	3.8	4.8	5.0	4.3	5.0	5.0	4.3	4.5	4.1	4.50
ROBINS	4.3	5.0	No Data	5.0	5.0	3.7	5.0	No Data	5.0	5.0	3.2	3.7	4.3	5.0	4.3	4.51
FRUCHTHENDLER ES	4.1	5.0	No Data	5.0	4.3	4.6	4.5	No Data	4.8	4.3	4.8	4.8	4.8	4.5	5.0	4.54
SOUTHWEST ED. CTR (678)	3.2	4.9	No Data	No Data	4.5	4.4	No Data	No Data	No Data	5.0	5.0	No Data	No Data	No Data	5.0	4.54
TUCSON MAGNET HS	2.9	4.7	No Data	No Data	5.0	4.1	4.8	5.0	5.0	4.5	4.8	4.5	3.5	5.0	5.0	4.56
VALENCIA MS	4.2	4.8	No Data	No Data	4.8	4.7	5.0	5.0	5.0	4.3	4.0	3.8	4.8	4.8	4.6	4.60
DIETZ	4.6	4.6	No Data	5.0	5.0	4.6	4.8	No Data	5.0	4.3	5.0	3.5	3.8	4.3	4.1	4.60
WHITMORE ES (#WHIT ANNEX)	4.3	4.4	No Data	4.8	5.0	4.6	4.5	5.0	4.0	5.0	5.0	4.3	4.5	4.0	3.9	4.62

MANSFELD MS	4.2	4.7	No Data	No Data	5.0	4.3	4.5	5.0	5.0	4.5	5.0	4.0	4.5	5.0	3.2	4.63
DAVIDSON ES	4.2	5.0	5.0	4.8	4.5	4.6	4.3	4.8	5.0	4.5	5.0	5.0	4.0	No Data	4.7	4.63
MORGAN-MAXWELL	4.6	5.0	4.8	4.3	4.0	5.0	4.8	5.0	5.0	5.0	5.0	4.0	4.3	4.3	4.6	4.63
BORMAN ES	4.3	4.6	5.0	5.0	4.8	4.7	5.0	5.0	4.8	5.0	5.0	1.0	4.5	No Data	4.4	4.63
JOHNSON PRIMARY ES	4.4	4.8	5.0	5.0	5.0	4.3	4.0	5.0	5.0	3.3	5.0	4.8	5.0	5.0	4.4	4.63
LYNN/URQUIDES ES	4.8	4.6	5.0	4.0	5.0	4.7	5.0	4.5	5.0	4.5	5.0	3.3	3.8	No Data	4.3	4.66
VAN BUSKIRK ES	4.2	4.4	5.0	4.8	5.0	4.6	5.0	4.8	4.5	4.5	5.0	4.3	4.3	4.3	4.6	4.67
STEELE ES	4.2	4.6	4.3	5.0	5.0	4.6	4.5	5.0	5.0	5.0	5.0	4.3	4.3	4.3	4.6	4.71
WRIGHT ES	4.3	4.9	4.3	5.0	5.0	4.1	5.0	4.5	5.0	5.0	5.0	No Data	4.5	5.0	4.9	4.76
FORD ES	4.8	4.4	No Data	5.0	5.0	4.7	5.0	No Data	5.0	5.0	5.0	3.5	4.5	No Data	4.4	4.80
MCCORKLE	4.4	5.0	5.0	5.0	5.0	4.3	5.0	No Data	5.0	4.5	5.0	4.8	5.0	4.8	4.7	4.80
ROSE	4.6	5.0	5.0	5.0	5.0	4.3	5.0	No Data	5.0	5.0	5.0	4.3	5.0	No Data	4.3	4.83
BANKS ES	4.2	4.8	No Data	5.0	5.0	4.9	5.0	5.0	5.0	5.0	5.0	4.8	5.0	5.0	4.3	4.87
CAVETT ES	4.5	4.9	5.0	5.0	5.0	4.9	5.0	4.8	5.0	5.0	5.0	4.5	5.0	5.0	4.7	4.90
COLLIER ES	4.8	4.8	5.0	5.0	5.0	4.9	5.0	No Data	5.0	5.0	5.0	4.5	4.8	5.0	4.7	4.91

NOTE: For categories with "No Data", the average score is multiplied by the weight

APPENDIX IX-6

IX.C.1.a (3) Final TCI Report SY2019-20

Spring 2019-20 05/30/2020	Classroom TCI	Teachers Proficiency TCI	Wireless TCI	Overall TCI District Avg	Integration	District Compare	Type Compare
	45%	45%	10%				
DISTRICT Averages	4.78	4.80	5.00	4.82			
BANKS	4.70	4.91	5.00	4.84	Racially Concentrated	Above	Above
BLENMAN	4.89	4.91	5.00	4.92	0	Above	Above
BLOOM	4.89	4.44	5.00	4.71	Integrated	Below	Below
BONILLAS	4.85	4.93	5.00	4.92	Integrated	Above	Above
BORMAN	4.36	4.91	5.00	4.69	0	Below	Below
BORTON	4.75	4.92	5.00	4.86	Integrated	Above	Above
CARRILLO	4.66	4.94	5.00	4.83	Integrated	Above	Above
CAVETT	4.85	4.95	5.00	4.92	Racially Concentrated	Above	Above
COLLIER	4.72	4.96	5.00	4.87	0	Above	Above
CRAGIN	4.84	4.90	5.00	4.89	Integrated	Above	Above
DAVIDSON	4.71	4.49	5.00	4.65	0	Below	Below
DAVIS	4.83	4.95	5.00	4.91	Integrated	Above	Above
DRACHMAN	4.90	4.81	5.00	4.88	Integrated	Above	Above
DUNHAM	4.69	4.78	5.00	4.78	0	Below	Below
ERICKSON	4.88	4.32	5.00	4.65	Integrated	Below	Below
FORD	4.78	4.94	5.00	4.89	0	Above	Above
FRUCHTHENDLER	4.81	4.96	5.00	4.91	0	Above	Above
GALE	4.62	4.87	5.00	4.78	0	Below	Below
GRIJALVA	4.84	4.52	5.00	4.72	Racially Concentrated	Below	Below
HENRY	4.75	4.96	5.00	4.88	0	Above	Above
HOLLADAY	4.86	4.73	5.00	4.82	0	Above	Above
HOWELL	4.32	4.91	5.00	4.66	Integrated	Below	Below
HUDLOW	4.79	4.98	5.00	4.90	Integrated	Above	Above
JOHNSON	4.67	4.41	5.00	4.60	0	Below	Below
KELLOND	4.81	4.93	5.00	4.90	0	Above	Above
LINEWEAVER	4.79	4.78	5.00	4.82	Integrated	Above	Above
LYNN	4.89	4.93	5.00	4.93	Racially Concentrated	Above	Above
MALDONADO	4.62	4.94	5.00	4.81	Racially Concentrated	Below	Below
MANZO	4.69	4.49	5.00	4.65	Racially Concentrated	Below	Below
MARSHALL	4.55	4.95	5.00	4.78	0	Below	Below
MILLER	4.95	4.78	5.00	4.89	Racially Concentrated	Above	Above
MISSION VIEW	4.75	4.93	5.00	4.87	Racially Concentrated	Above	Above
MYERS	4.95	4.96	5.00	4.97	0	Above	Above
OCHOA	4.90	4.90	5.00	4.92	Racially Concentrated	Above	Above
OYAMA	4.76	4.75	5.00	4.79	Racially Concentrated	Below	Below
ROBISON	4.98	4.90	5.00	4.96	Racially Concentrated	Above	Above
HUGHES	4.60	4.95	5.00	4.80	Integrated	Below	Below
SEWELL	4.69	4.95	5.00	4.85	Integrated	Above	Above
SOLENG TOM	4.65	4.26	5.00	4.52	0	Below	Below
STEELE	4.77	4.93	5.00	4.88	0	Above	Above
TOLSON	4.80	4.93	5.00	4.89	Racially Concentrated	Above	Above
TULLY	4.62	4.73	5.00	4.71	Integrated	Below	Below
VAN BUSKIRK	4.74	4.32	5.00	4.59	Racially Concentrated	Below	Below
VESEY	4.83	4.94	5.00	4.91	Racially Concentrated	Above	Above
WARREN	4.72	4.92	5.00	4.85	Racially Concentrated	Above	Above
WHEELER	4.95	4.70	5.00	4.85	Integrated	Above	Above
WHITE	4.70	4.09	5.00	4.46	Racially Concentrated	Below	Below
WHITMORE	4.92	4.93	5.00	4.94	0	Above	Above
WRIGHT	4.85	4.91	5.00	4.91	0	Above	Above
Elementary Averages	4.77	4.81	5.00	4.82			
BOOTH FICKETT	4.99	4.81	5.00	4.92	0	Above	Above
ROSE	4.95	4.90	5.00	4.94	Racially Concentrated	Above	Above
DIETZ	4.86	4.91	5.00	4.90	0	Above	Above
HOLLINGER	4.98	4.91	5.00	4.96	Racially Concentrated	Above	Above
LAWRENCE	4.66	4.20	5.00	4.50	0	Below	Below
MCCORKLE	4.78	4.92	5.00	4.88	Racially Concentrated	Above	Above
MILES	4.59	4.93	5.00	4.79	Integrated	Below	Below
MAXWELL	4.98	4.91	5.00	4.96	Racially Concentrated	Above	Above
PUEBLO GARDENS	4.88	4.93	5.00	4.93	Racially Concentrated	Above	Above
NAYLOR	4.95	4.95	5.00	4.96	0	Above	Above
ROBINS	4.72	4.26	5.00	4.55	Integrated	Below	Below
ROSKRUGE	4.82	4.94	5.00	4.90	Racially Concentrated	Above	Above
SAFFORD	4.98	4.84	5.00	4.93	Racially Concentrated	Above	Above

Spring 2019-20 05/30/2020	Classroom TCI	Teachers Proficiency TCI	Wireless TCI	Overall TCI District Avg	Integration	District Compare	Type Compare
K-8 Averages	4.86	4.81	5.00	4.86			
Mary Meredith K-12	4.28	3.73	5.00	4.11	0	Below	Above
K-12 Averages	4.28	3.73	5.00	4.11			
DODGE	4.94	4.97	5.00	4.97	Integrated	Above	Above
DOOLEN	4.98	4.91	5.00	4.97	0	Above	Above
GRIDLEY	4.85	4.91	5.00	4.91	0	Above	Below
MAGEE	4.95	4.61	5.00	4.81	0	Below	Below
MANSFELD	4.92	4.98	5.00	4.97	Integrated	Above	Above
PISTOR	4.88	4.84	5.00	4.88	Racially Concentrated	Above	Below
SECRIST	4.94	4.91	5.00	4.95	Integrated	Above	Above
UTTERBACK	4.95	4.90	5.00	4.94	Racially Concentrated	Above	Above
VAIL	4.90	4.91	5.00	4.93	Integrated	Above	Above
VALENCIA	4.96	4.75	5.00	4.88	Racially Concentrated	Above	Below
Middle Averages	4.93	4.88	5.00	4.92			
8, K-12, Middle Average	4.81	4.79	5.00	4.83			
CATALINA	4.91	4.91	5.00	4.93	Integrated	Above	Above
CHOLLA	4.92	4.64	5.00	4.81	Racially Concentrated	Below	Above
PALO VERDE	4.94	4.92	5.00	4.95	Integrated	Above	Above
PROJECT MORE	4.68	4.90	5.00	4.82	Integrated	Above	Above
PUEBLO	4.91	4.44	5.00	4.71	Racially Concentrated	Below	Below
RINCON	4.98	4.49	5.00	4.78	Integrated	Below	Above
SABINO	4.76	4.67	5.00	4.76	0	Below	Below
SAHUARO	4.95	4.91	5.00	4.94	Integrated	Above	Above
SANTA RITA	4.91	4.73	5.00	4.84	Integrated	Above	Above
TAPP	4.49	5.00	5.00	4.78	Racially Concentrated	Below	Above
THMS	5.00	4.91	5.00	4.96	Integrated	Above	Above
UNIVERSITY	2.63	4.93	5.00	3.91	0	Below	Below
High School Averages	4.68	4.79	5.00	4.77			

APPENDIX IX-7

IX.C.1.b TCI Summary of Results

Technology Condition Index - June 30, 2020

The school district’s hardware inventory data between School Year 2018-2019 and School Year 2019-2020, showed the following key results:

- The overall TCI for TUSD has increased from 4.77 to 4.82, an increase of 1.05 percent.
- The Student Device index increased from 4.77 to 4.78, an increase of 0.21 percent.
- The Teacher Proficiency index increased from 4.69 to 4.80, an increase of 2.35 percent
- The Wireless Index rating of 5.00 remain the same as last year of SY 2018-19.

Comparison of the SY 2018-19 and SY 2019-20 Technology Conditions Indexes

TCI 2018-19 District Avg	TCI 2019-20 District Avg	% Change from SY 2018-19
4.77	4.82	1.05%

Classroom TCI 2018-19	Classroom TCI 2019-20	% Change from SY 2018-19
4.77	4.78	0.21%

Proficiency TCI SY 2018-19	Proficiency TCI SY2019-20	% Change from SY 2018-19
4.69	4.80	2.35%

Wireless TCI SY 2018-19	Wireless TCI SY2019-20	% Change from SY 2018-19
5.00	5.00	0.0 %

Student Device Counts:

Students Computer	Total Units SY 2018-19	Total Units SY 2019-20	N. Change From SY 2018-19	% Change from SY 2018-19
Desktop	9,543	9,599	56	0.59%
Laptop	20,546	20,713	167	0.81%
Tablet	6,210	7,908	1,698	27.34%
Total	36,299	38,220	1,921	5.29%

Student Device Counts by School Level:

School Level	SY 2018-19	SY 2019-20	N. Change From SY 2018-19	% Change from SY 2018-19
Elementary	15,856	15,928	72	0.45%
K-8	7,167	7,616	449	6.26%
K-12	135	135	0	0.00%
Middle	4,688	5,993	1,305	27.84%
High School	8,453	8,548	95	1.12%
Grand Total	36,299	38,220	1,921	5.29%

It is notable that the district has continued to make gains in the Technology Condition Index during SY 2019-2020.

In the SY 2019-2020, Technology Services Department has purchased 1,698 new tablets, 167 new laptops, and 56 new desktops for TUSD students use across the district as part of normal procedures. This is reflected in the overall increase in the student device inventory of 5.29 percent from the SY 2018-19.

As part of the response to the COVID19 emergency, the District has purchased 12,000 Chromebooks for student use. These were distributed to students who identified a need for a device and are not part of the 2019-2020 Student Device inventory. They will be absorbed into normal school inventory over the 2020-2021 school year and counted as part of future indexes.

APPENDIX IX-8

Facility Support Staff

1. The District shall provide, as part of its Annual Report:

c. A report on the number and employment status (e.g., full-time, part-time) of facility support staff at each school (e.g., custodians, maintenance and landscape staff), and the formula for assigning such support. [USP § IX(C)(1)(c)]

*** FACILITY SUPPORT STAFF REPORT**

The below facility support staff positions are assigned by the following formulas. See Chart on next page for actual FTEs assigned to each school site.

	Elementary	K8	Middle	High
Custodians	$\frac{\text{Area}/27,000 + \text{Student Load}/300}{\text{Divided by } 2} + \text{ExEd Classrooms} \times .125 = \text{custodial FTE}$	$\frac{\text{Area}/27,000 + \text{Student Load}/300}{\text{Divided by } 2} + \text{ExEd Classrooms} \times .125 = \text{custodial FTE}$	$\frac{\text{Area}/30,000 + \text{Student Load}/310}{\text{Divided by } 2} + \text{ExEd Classrooms} \times .125 = \text{custodial FTE}$	$\frac{\text{Area}/35,000 + \text{Student Load}/350}{\text{Divided by } 2} + \text{ExEd Classrooms} \times .125 = \text{custodial FTE}$
Maintenance (Engineer)	Roving Staff	Roving Staff	Roving Staff	1.00 FTE per site
Groundskeeper (Landscape)	Roving Staff	0.50 FTE per site	0.50 FTE per site	2.00 FTE per site

The below facility support staff positions provide support to all TUSD buildings, including schools.

Roving Support Staff:	2012-13	2013-14	2014-15	2015-16	2016-17	2017-18	2018-19	2019-20
	FTEs	FTEs	FTEs	FTEs	FTEs	FTEs	FTEs	FTEs
Custodian	11	11	13	24	24	24	22	23
Grounds Maintenance	34	30	44	32	32	32	32	29
Carpenter	5	4	4	4	4	5	5	5
Plumber	7	8	8	8	8	8	8	8
Electrician	4	5	5	5	5	5	5	5
Painter	4	6	6	7	7	6	6	6
HVAC	12	14	14	13	12	12	12	12
EMCS	3	3	3	3	3	3	3	3
Locksmith	5	4	4	4	4	4	4	4
Glazier	2	2	2	2	2	2	2	2
Roofer	4	4	4	5	5	5	5	5
Fire Safety	8	8	8	8	8	8	8	8
General Maintenance	6	10	10	10	10	10	11	10
Preventative Maintenance	-	-	-	3	3	3	3	6
Program Manager	5	4	4	4	3	3	2	2
Foreman	2	4	9.5	4	5	5	8	6
Supervisor	9	10	10	9	9	9	5	5
TOTAL ROVERS	121	127	148.5	145	144	144	141	139

LYNN URQUIDES	FTE custodians	4.50	3.00	3.0	3.0	3.0	3.0	3.0	3.0
MALDONADO	FTE custodians	2.00	1.50	1.5	1.5	1.5	1.5	1.5	1.5
MANZO	FTE custodians	2.00	1.70	1.5	1.5	1.5	1.5	1.5	1.5
MARSHALL	FTE custodians	2.00	1.50	1.5	1.5	1.5	1.5	1.5	1.5
MILLER	FTE custodians	2.00	2.00	2.0	2.0	2.0	2.0	2.0	2.0
MISSION VIEW	FTE custodians	2.00	1.50	1.5	1.5	1.5	1.5	1.5	1.5
MYERS	FTE custodians	3.00	2.50	2.5	2.5	2.5	2.5	2.5	2.5
OCHOA	FTE custodians	1.50	1.50	1.5	1.5	1.5	1.5	1.5	1.5
OYAMA	FTE custodians	2.00	2.00	2.0	2.0	2.0	2.0	2.0	2.0
ROBISON	FTE custodians	2.00	1.50	1.5	1.5	1.5	1.5	1.5	1.5
SEWELL	FTE custodians	2.00	1.50	1.5	1.5	1.5	1.5	1.5	1.5
SOLENG TOM	FTE custodians	2.50	1.50	1.5	1.5	2.0*	2.0**	2.0**	2.0
STEELE	FTE custodians	2.00	1.50	1.5	1.5	1.5	1.5	1.5	1.5
TOLSON	FTE custodians	2.00	1.50	1.5	1.5	1.5	1.5	1.5	1.5
TULLY	FTE custodians	2.50	2.00	2.0	2.0	2.0	2.0	2.0	2.0
VAN BUSKIRK	FTE custodians	2.00	2.00	2.0	2.0	2.0	2.0	2.0	2.0
VESEY	FTE custodians	2.50	2.00	2.0	2.0	2.0	2.0	3.0	3.0
WARREN	FTE custodians	2.00	1.50	1.5	1.5	1.5	1.5	1.5	1.5
WHEELER	FTE custodians	2.00	2.50	2.5	2.5	2.5	2.5	2.5	2.5
WHITE	FTE custodians	2.50	2.00	2.0	2.0	2.0	2.0	2.0	2.0
WHITMORE	FTE custodians	2.00	2.00	2.0	2.0	2.0	2.0	2.0	2.0
WRIGHT	FTE custodians	2.00	2.00	2.0	2.0	2.0	2.0	2.0	2.0

*Soleng Tom was allocated 2.0 custodial fte from M&O and 1.0 fte from other. Confirmed with Finance they were only budgeted for 2.0 fte from M&O total.

**Soleng Tom Budget Book states 2.5 fte for Custodians, but Finance confirmed they are budgeted 2.0.

ROBINS K-8	FTE custodians FTE ground maintenance	2.00 0.50	2.00 Roving Crew	2.00 Roving Crew	2.00 0.50	2.00 0.50	2.00 0.50	2.00 0.50	2.00 0.50
ROSE K-8	FTE custodians FTE ground maintenance	3.00 0.50	2.50 Roving Crew	2.50 Roving Crew	2.50 0.50	2.50 0.50	2.50 0.50	2.50 0.50	2.50 0.50
ROSKRUGE ELEM K-8	FTE custodians FTE ground maintenance	3.00 0.50	2.50 Roving Crew	2.50 Roving Crew	2.50 0.50	2.50 0.50	2.50 0.50	2.50 0.50	2.50 0.50
SAFFORD K-8	FTE custodians FTE ground maintenance	4.00 0.50	4.00 0.50	4.00 0.50	4.00 0.50	4.00 0.50	4.00 0.50	4.00 0.50	4.00 0.50
Middle Schools	Support Type	2012-13	2013-14	2014-15	2015-16	2016-17	2017-18	2018-19	2019-20
DODGE	FTE custodians FTE ground maintenance	2.00 0.50	1.50 Roving Crew	1.50 Roving Crew	1.50 0.50	1.50 0.50	1.50 0.50	1.50 0.50	1.50 0.50
DOOLEN	FTE custodians FTE ground maintenance	4.00 0.50	3.50 0.50	3.50 0.50	3.50 0.50	3.50 0.50	3.50 0.50	3.50 0.50	3.50 0.50
GRIDLEY	FTE custodians FTE ground maintenance	3.00 0.50	2.50 0.50	2.50 0.50	2.50 0.50	2.50 0.50	2.50 0.50	2.50 0.50	2.50 0.50
MAGEE	FTE custodians FTE ground maintenance	4.00 0.50	3.00 0.50	3.00 0.50	3.00 0.50	3.00 0.50	3.00 0.50	3.00 0.50	3.00 0.50
MANSFELD	FTE custodians FTE ground maintenance	4.00 0.50	3.50 0.50	3.50 0.50	3.50 0.50	4.00 0.50	4.00 0.50	4.00 0.50	4.00 0.50
PISTOR	FTE custodians FTE ground maintenance	4.50 0.50	3.50 0.50	3.50 0.50	3.50 0.50	3.50 0.50	3.50 0.50	3.50 0.50	3.50 0.50
SECRIST	FTE custodians FTE ground maintenance	2.00 0.50	2.00 0.50	2.00 0.50	2.00 0.50	2.00 0.50	2.00 0.50	2.50 0.50	2.50 0.50

UTTERBACK	FTE custodians	6.00	4.00	4.00	4.00	3.00	3.00	3.00	3.00
	FTE ground maintenance	0.50	0.50	0.50	0.50	0.50	0.50	0.50	1.00
VAIL	FTE custodians	4.00	3.00	3.00	3.00	3.00	3.00	3.00	3.00
	FTE ground maintenance	0.50	0.50	0.50	0.50	0.50	0.50	0.50	0.50
VALENCIA	FTE custodians	5.00	3.00	3.00	3.00	3.00	3.00	3.00	3.00
	FTE ground maintenance	0.50	0.50	0.50	0.50	0.50	0.50	0.50	0.50
High Schools	Support Type	2012-13	2013-14	2014-15	2015-16	2016-17	2017-18	2018-19	
CATALINA	FTE custodians	9.00	7.50	7.50	7.50	8.50	8.50	7.50	7.50
	FTE engineers	2.00	1.00	1.00	1.00	1.00	1.00	1.00	1.00
	FTE ground maintenance	2.00	1.00	2.00	2.00	2.00	2.00	2.00	2.00
CHOLLA	FTE custodians	9.00	8.00	8.00	8.00	8.00	8.00	8.00	8.00
	FTE engineers	1.00	1.00	1.00	1.00	1.00	1.00	1.00	1.00
	FTE ground maintenance	2.00	1.60	1.60	2.00	2.00	2.00	2.00	2.00
PALO VERDE	FTE custodians	8.00	7.00	7.00	7.00	7.00	7.00	7.00	7.00
	FTE engineers	1.00	1.00	1.00	1.00	1.00	1.00	1.00	1.00
	FTE ground maintenance	2.00	2.00	2.00	2.00	2.00	2.00	2.00	2.00
PUEBLO	FTE custodians	maintenance	8.00	8.00	8.00	8.00	8.00	8.00	8.00
	FTE engineers		1.00	1.00	1.00	1.00	1.00	1.00	1.00
	FTE ground maintenance		1.60	2.00	2.00	2.00	2.00	2.00	2.00
RINCON /UHS Campus Shared	FTE custodians	9.00	9.00	9.00	9.00	9.00	9.00	9.00	9.00
	FTE engineers	1.00	1.00	1.00	2.00	1.00	1.00	1.00	1.00
	FTE ground maintenance	2.00	1.60	1.60	2.00	2.00*	2.00	2.00	2.00
SABINO	FTE custodians	8.00	6.50	6.50	6.50	6.50	6.50	6.50	6.50
	FTE engineers	1.00	1.00	1.00	1.00	1.00	1.00	1.00	1.00
	FTE ground maintenance	2.00	1.60	1.60	2.00	2.00	2.00	2.00	2.00

SAHUARO	FTE custodians	9.00	8.00	8.00	8.00	8.00	8.00	8.00	8.00
	FTE engineers	1.00	1.00	1.00	1.00	1.00	1.00	1.00	1.00
	FTE ground maintenance	2.00	2.00	2.00	2.00	2.00	2.00	2.00	2.00
SANTA RITA	FTE custodians	8.00	6.50	6.50	6.50	6.50	6.50	6.00	6.00
	FTE engineers	1.00	1.00	1.00	1.00	1.00	1.00	1.00	1.00
	FTE ground maintenance	2.00	1.60	2.00	2.00	2.00	2.00	2.00	2.00
TUCSON	FTE custodians	14.00	14.00	14.00	14.00	14.00	14.00	14.00	14.00
	FTE engineers	1.00	2.00	1.00	2.00	2.00	2.00	2.00	2.00
	FTE ground maintenance	2.00	2.60	3.00	3.00	3.00	3.00	3.00	3.00
UNIVERSITY (See Rincon/UHS Shared Campus)	Roving support	Roving support							

*16-17 Budget Book has an error giving Rincon 2.0 fte and UHS 2.0 fte each for Grounds Maintenance. Finance corrected this error and the combined site only has 2 Grounds Maintenance FTE total.