

### Schools Currently Offering Dual Language Enrichment:

Davis Bilingual Magnet

Grijalva Elementary

Hollinger Elementary

Mary Belle McCorkle

Mission View Elementary

Roskrue Bilingual Magnet

Van Buskirk Elementary

White Elementary

Pistor Middle School

Pueblo Magnet High School



If you talk to a man in a language  
he understands, that goes to his head. If  
you talk to him in his own language, that  
goes to his heart. *Nelson Mandela*

### TUCSON UNIFIED SCHOOL DISTRICT

#### Governing Board

Adelita S. Grijalva, President

Kristel Ann Foster, Clerk

Michael Hicks, Member

Cam Juárez, Member

Dr. Mark Stegeman, Member

#### Superintendent

Dr. H.T. Sánchez

#### Deputy Superintendent

Dr. Adrian Vega

#### Asst. Superintendent of Curriculum Instruction

Steven Holmes

#### Language Acquisition Department

Ignacio Ruiz, Director

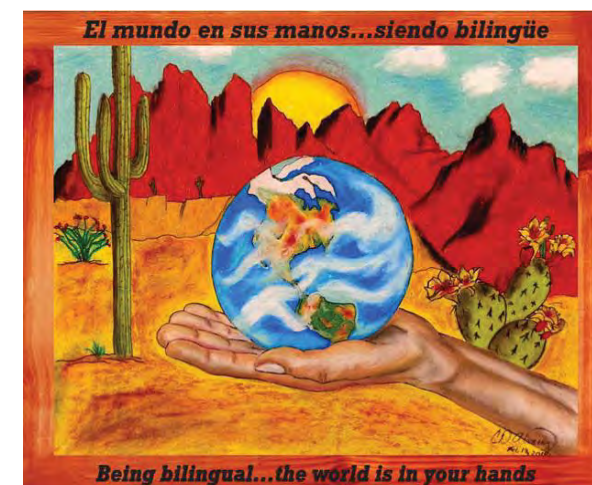
#### Notice of Nondiscrimination

Tucson Unified School District does not discriminate on the basis of race, color, national origin, sex, sexual orientation, age, religion, or disability in admission or access to, or treatment or employment, in its educational programs or activities.

# TUSD

## Two-Way Dual Language (TWDL) Program

An Advanced Learning  
Experience



## Language Acquisition Department *Lee Instructional Resource Center*

2025 E. Winsett St.  
Tucson, AZ 85719  
(520)225-4600

# A 21<sup>st</sup> Century Education

## The Benefits of Dual Language

New research indicates that students who master two or more languages develop key cognitive advantages, including:

- better impulse control
- greater attention span
- enhanced mental agility

Dual Language learning also enhances students’ preparation for college and university, as well as for career opportunities in the global market.

## Entrance Criteria

All students are eligible whose parents have solicited and have qualified for a Parental Waiver Application to participate in a Dual Language Program.

- All students will be evaluated orally in Spanish with the LAS test.
- Any student identified as less proficient orally in English or in Spanish will be recommended for additional language support.

## How Dual Language Works

In Kindergarten students receive 90% instruction in Spanish with 10% instruction in English. Continuing students receive instruction where the two languages gradually reach 50% Spanish and 50% English by fourth grade. The expected goal is for students to demonstrate grade-level literacy and fluency in both languages.

## Why English and Spanish?

These languages are the two most commonly spoken in the U.S. and hold official U.N. status as international languages.

## Language of Instruction

| GRADE | SPANISH | ENGLISH |
|-------|---------|---------|
| K     | 90%     | 10%     |
| 1     | 80%     | 20%     |
| 2     | 70%     | 30%     |
| 3     | 60%     | 40%     |
| 4     | 50%     | 50%     |
| 5     | 50%     | 50%     |
| 6-12  | 50%     | 50%     |

