

7th and 8th Grade Focus

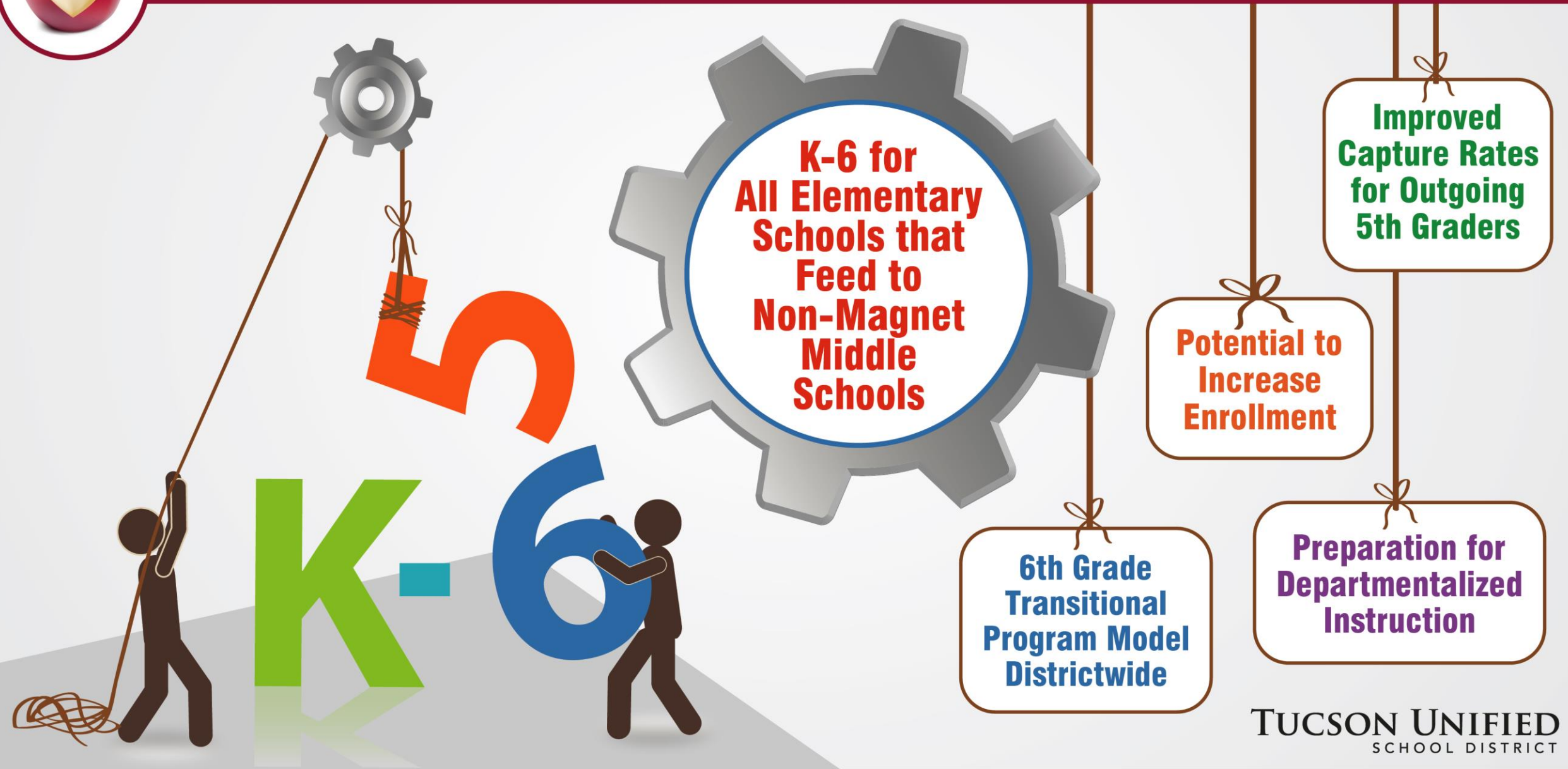
K-8 Schools and Magnet Middle Schools Excluded

Smaller Class Sizes for 7th and 8th Grade

Algebra and Literacy Focus



The K-6 School





Middle School Education:
A New Vision

A Dodge Middle School of the West



TUCSON UNIFIED
SCHOOL DISTRICT



**High
Standards
Middle
School
Option**

*High School and College
Readiness Curriculum*

Open Access Program

Smaller Middle School Option

Address Overcrowding in the West

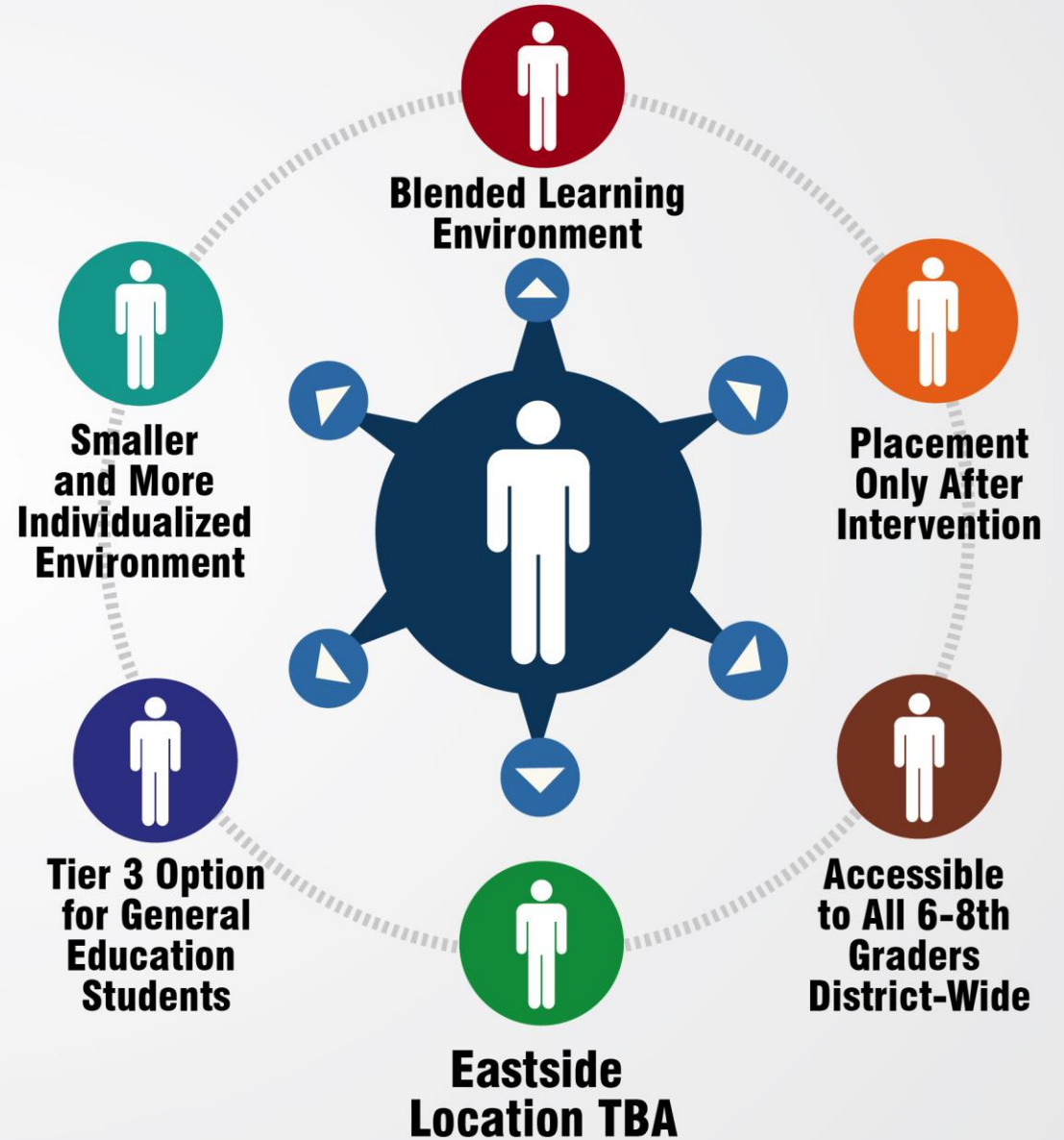




Southwest Center



Alternative Middle School Option for Struggling Students





Transition to Middle School causes student disengagement and stagnant student learning, discipline concerns, and ultimately increased likelihood of high school dropout.

• *Juvonen et al (2004)*

Moving between schools adversely impacts students.

• *Schwartz et al (2001); Hanusek et al (2004); South et al (2007); Xu et al (2009); Ozek (2009)*



Student transitions are associated with a decline in student performance.

• *Whiteley et al (2007)*

Middle School students more vulnerable to poor long-term outcomes because of physical, emotional, and intellectual changes they experience.

• *Juvonen et al (2004)*



Segmented middle school schedule does not allow for individualized student attention or personal student teacher relationships.

• *Weiss & Kipnes (2006)*

Staffing practices of middle schools are plagued by lower rates of retention, less experience, & lower rates of certification than at elementary or high schools.

• *Jackson & Davis (2000);
McEwin et al (1996)*



What the Research Says

School transitions are associated with lower self-esteem and behavioral problems.

• *Anderman & Midgley (1997);
Arcia (2007); Bergquist et al 2004);
Cook et al (2008); Cromwell (1999);
Kennedy (1993); Malaspina et al (2008);
Mendez et al (2003); Simmons et al (1991);
Weiss & Knippes (2006)*



Enrollment and Utilization Shift



Benefits

\$3.5 MILLION PER YEAR Potential Enrollment Increases



Better Academic Outcomes

Prepare Students for High School

- Socially
- Emotionally
- Academically



Increase Parental Choice

Costs



Wakefield \$2.3M



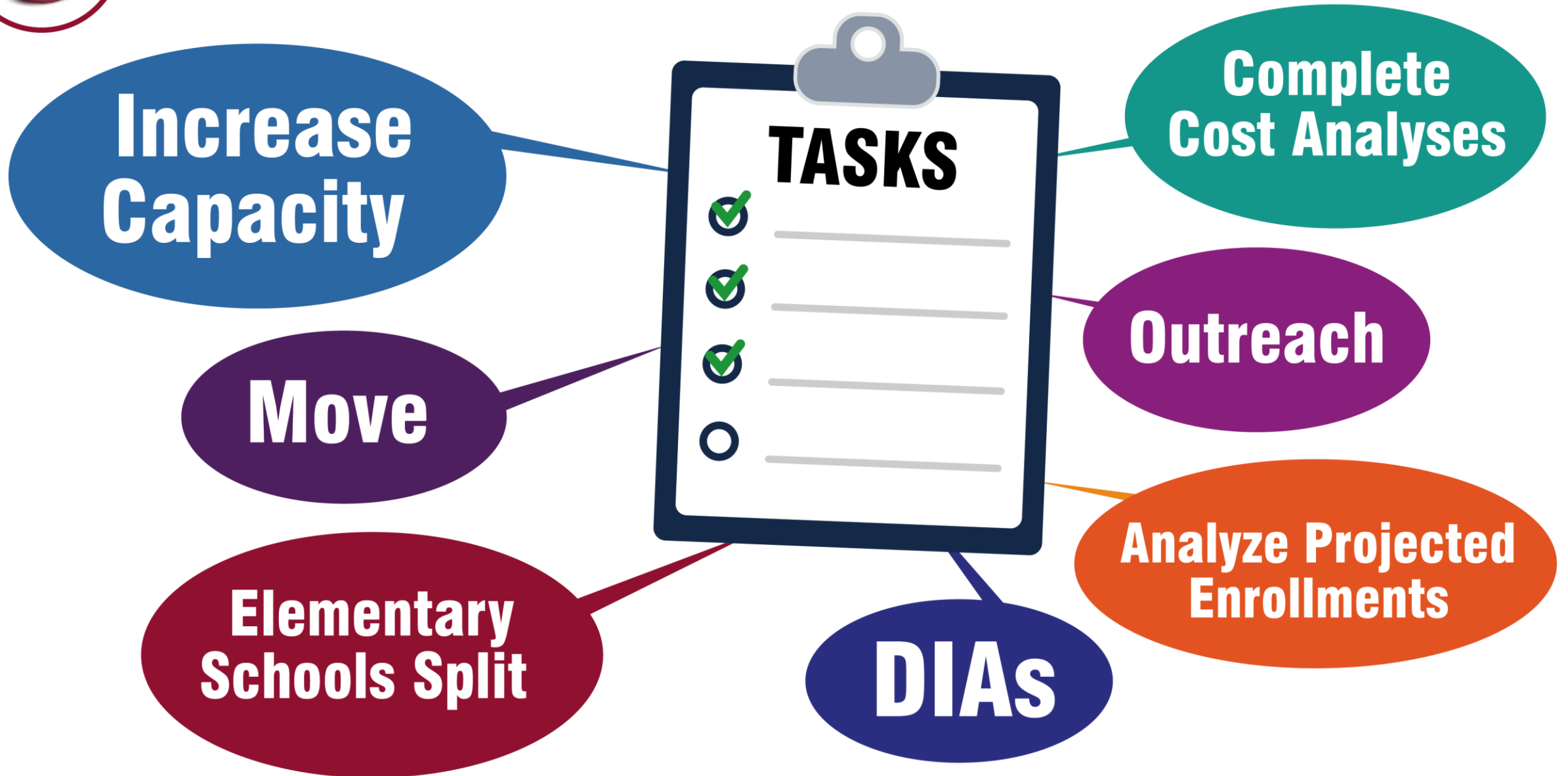
Portables \$700k



Moves \$150k



Identify Issues and Solutions





What does our data tell us?

740
STUDENTS
LEFT TUSD
AFTER 5TH GRADE
at the end of the
2017-18 school year

AzMERIT SCORES

6-8th Graders
K-8 Environment

6-8th Graders
Traditional
Middle School

HIGHER SCORES
2017-18 AND 2018-19

(GATE students excluded)