

APPENDIX VI-18

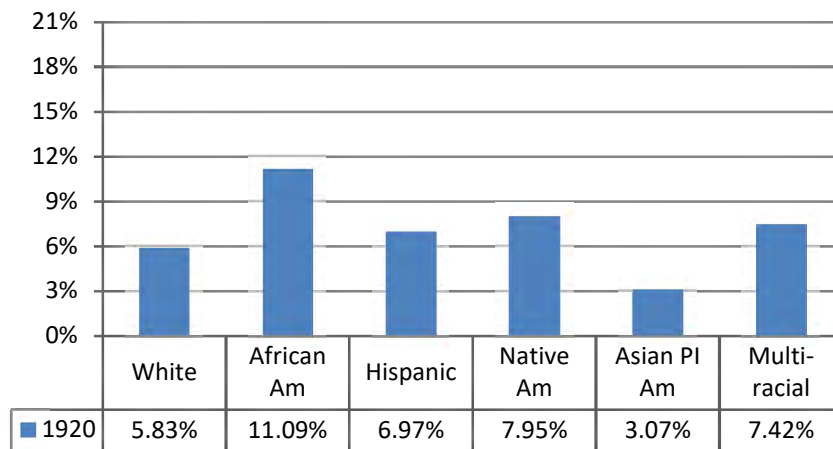
2019-20 Discipline Outcomes: Rates and Suspensions

This section includes data and analysis for two primary types of discipline outcomes: student discipline rates and out-of-school suspensions.

A. Student Discipline Rates

Graph 6.# below shows the student discipline rate by race/ethnicity for the past five years.

Graph 6.#: 2019-20 Discipline Rates by Ethnicity



**Table 6.#: Discipline Rates
Differences between White-African American, and White-Hispanic Rates**

	White	African Am	Hispanic
2019-20	5.83%	11.09%	6.97%
	Difference	5.26%	1.15%

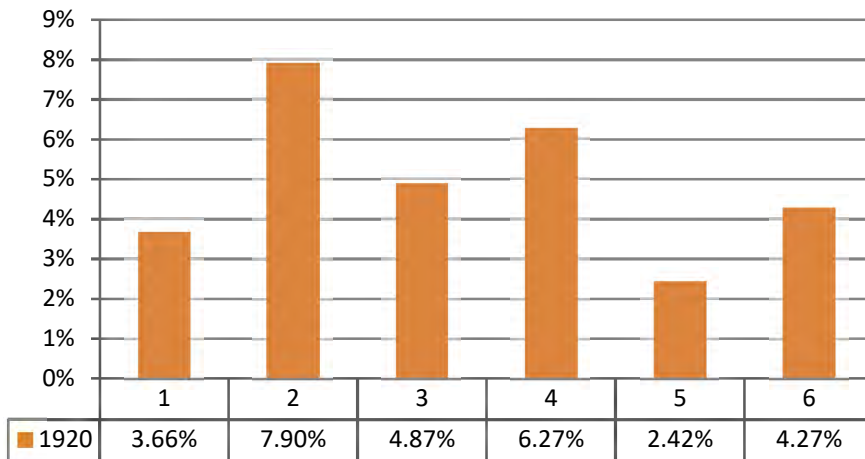
B. Out-of-School Suspension

The following narrative measures out of school suspensions three ways: (1) suspension rate differences between racial/ethnic groups, (2) suspension proportionality (P-Index), and (3) likelihood of suspension. Measures 2 and 3 are the strongest measures because they are proportional to student population.

1. Suspension Rates

Graph 6.X below shows out-of-school suspension rates by race/ethnic group for SY2019-20

Graph 6.x.: Out of School Suspension Rates by Ethnicity for 2019-20



**Table 6.#: Out-of-School Suspension 2019-20
Differences between White-African American, and White-Hispanic Rates**

	White	African Am	Hispanic
2019-20	3.66	7.90	4.87
	Difference	4.24	1.21

2. Suspension Proportionality

A “proportionality” index (p-index) divides the percentage of students within a racial/ethnic group that received a particular consequence (e.g., short- or long- term suspension) with the group’s percentage of enrollment. A p-index of 1.0 indicates that students in the group are suspended in the same proportion as

their share of the total student population.¹ Table 6.# and Table 6.# shows the p-index for both types of suspensions for African American and Hispanic students from SY2014-15 to SY2018-19.

Table 6.#: P-Index for African American Student Out-of-School Suspensions

School Year	2019-20
District Enrollment	9%
Short-Term Suspension	16%
P-Index	1.78

School Year	2019-20
District Enrollment	9%
Long-Term Suspension	13%
P-Index	1.44

Table 6.#: P-Index for Hispanic students Out-of-School Suspensions for 2020-20

School Year	2019-20
District Enrollment	61%
Short-Term Suspension	60%
P-Index	0.98

School Year	2019-20
District Enrollment	61%
Long-Term Suspension	68%
P-Index	1.11

¹ The “proportionality” index is the equivalent of the Students Suspended Index (SSI) described by Dr. Charles M. Achilles in Chapter 8, Racial Disparities in School Discipline. In: Russell, C., D. Armor, and H.J. Walberg (eds.). School Desegregation in the 21st Century.

3. Likelihood Ratios

The District calculates a likelihood ratio that compares the p-index for white students against the p-index for African American and Hispanic students.

Table 6.#: Likelihood Ratio for Out of School Suspensions

Short-Term Suspensions

Short-term	2019-20
AfAm/White Ratio	2.4
Hispanic/White Ratio	1.3

Long-Term Suspensions

Long-term	19-20
AfAm/White Ratio	2.6
Hispanic/White Ratio	2.0