


APPENDIX V – 181

Specialist TrainingSC



Student Specialist
Tucson Unified School District
January 15, 2016

PLEASE LOG INTO SCHOOL CITY
Tusd1.schoolcity.com

Quarterly Benchmark Data

1

Agenda

- I. Introduction
- II. What is a Predefined Report?
- III. How to Access a Summary Report
- IV. Viewing Options
- V. Custom Report
- VI. Standard Analysis
- VII. Pivot Table
- VIII. SharePoint

2

Objective:

Understand how your school performed on the Q2 Benchmark and identify areas in which your school can improve.

3

Why Examine The Benchmarks?

Are the benchmarks aligned to AzMERIT?

- Yes. Blue Prints were created from what we know about AzMERIT and aligned to the Scope and Sequence.

Are the benchmarks accurate predictors of performance?

- Yes. View Correlation table below.

ELA Quarter 1 – Quarter 2 Correlations		Math Quarter 1 – Quarter 2 Correlations	
Q1 – Q2 Correlations	Grade	Q1 – Q2 Correlations	Grade
.74	2	.78	2
.66	3	.68	3
.75	4	.79	4
.75	5	.78	5
.68	6	.72	6
.68	7	.71	7
.75	8	.68	8
.71	9	.61	9 (A&S)
.69	10	.69	10 (Gen)
		.61*	11-12 (A&S)

4

Summary Report:

Purpose: Evaluate and compare TUSD, school, and teacher level performance of a single assessment.

Questions you may consider which you can evaluate through this report?

- How did my school do compared to TUSD?
- Are there any standards in which a teacher's roster performed poorly on?
 - Was this because students did not grasp the concept? How do I support the reteach?
 - Was this because the teacher did not teach this concept? (Scope and Sequence)
 - How we assure any reteaching was successful?
- Are there any items specifically that we should revisit?
- Are there item types that my students are struggling with (multiple response, the blank, selecting the best sentence)
- Is poor performance on an item indicative of the vocabulary in the question?

5

Access a Summary Report

There are two ways to access Predefined Reports.



6

From the Report Manager tab in the Top Menu Bar..

Click on Summary

7

Select Your Assessment of Interest

1. Assessment Name
2. Change Assessment Button (Click to Access Filter)

Clicking the Change Assessment button will cause another filter to appear; this new filter is shown on the next slide.

8

Select Your Assessment of Interest

3. Change Year Drop Down
4. Change Assessment Subject Drop Down
5. Change Assessment Drop Down
6. Apply (Click to Apply Change)

LA participants please select ELA
 ELA participants please select Benchmark by:
 EM = ELA.03.Q2
 FC = ELA.03.Q2
 MS = ELA.07.Q2
 HS = ELA.09.Q2

9

Read the Summary Report - Viewing Options

There are subsections to the Summary Report (performance, standards, items). Summary by Performance can further be broken down as shown below (school, grade, teacher, period).

This report can be exported and printed in these formats.

10

Read the Summary Report - By Standards

The Summary Report By Standards shows the overall performance of the class on the assessment, as well as overall performance for each standard aligned to the assessment.

Click the Standard subsection. This report allows you to see teacher's roster performance.

Hover over a Standard to see specific information on that standard.

11

Read the Summary Report - By Items

Summary data By Items shows the overall performance of the class, as well as performance on each test item on the assessment.

The report allows you to see how each teacher's roster performed per assessment item.

Filter Ascending/Descending

12

Custom Report:

Purpose: Evaluate school, teacher, and student level performance on multiple assessments through a single report.

Questions you may consider which you can evaluate through this report?

- After comparing your schools results against TUSD, is there a grade-level/subject that you would consider a hot spot due to a large difference in average percent?
 - Is there a grade level initiative I should implement?
 - How can I support my teachers in overcoming the deficiency?
 - Are there interventions that I should consider?
- Evaluating the performance of every teachers roster, which teacher's roster performed the best or worst?
 - Are there non ELA/Math teachers with poor performing rosters who may offer the biggest potential for gains?
 - How do I recognize teachers/students for their performance?

13

From the Report Manager tab in the Top Menu Bar..

1. Click on the **Custom** tab to view a list of existing custom reports.

2. To create a new Custom Report, click **Create New..**

14

Custom Report: Selecting Your Q2 Assessments

1. Select all of the Q2 Assessments by single clicking on them from the left box. The assessment will then move to the right box.

1. **Tip:** By typing Q2 in the search bar, all items in the list below you will have Q2 in your search.
2. Click to check all of the Percent Correct and Performance Level Boxes below.
3. Click Show Advanced Information

15

Adding Columns To the Custom Report

1. Click on demographics of interest to add a column with this information to the student level custom report.

2. Click **Save and Run**

16

Give Your Report a Unique Name

Name your report and then click **Save**

17

Custom Report: Student Level and School Level Data

1. Click **Summary** for high level reports

Activity:
Take 3 minutes and familiarize yourself with this report.

Be prepared to share:
How will you use this at your site?

18

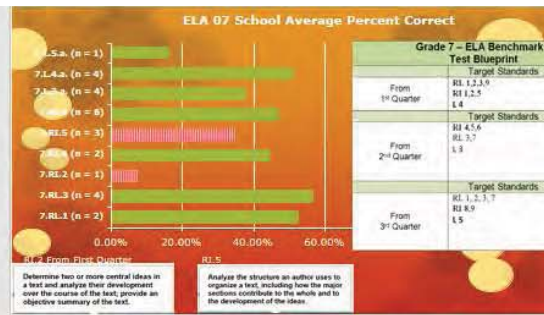
Predefined Reports: Standard Analysis

Purpose: Establish a school wide focus on standards in need of improvement

Questions you may consider which you can evaluate through this report?

- What are the standards I had expected students to do well on?
- What are the strengths and weaknesses in the standards: where do we need to work the most?
- How did the class do on Quarter 1 versus Quarter 2 standards? Are they forgetting or improving on previous material?
- What standards does the teacher need to re-teach going into Quarter 3?
- What is your plan for re-teaching?

19



20

From the Report Manager tab in the Top Menu Bar

1. Click on **Report Manager**

2. Click on **Standard Analysis**

21

Read the Standard Analysis Report

Show Demographic and Time Spent are optional measurements. You may simplify your report by removing the check from the box by clicking.

The average column shows you how your school performed on a standard.

22

Standard Analysis Report:

Complete Standard Analysis Activity (10 min)

23

Comparing Q1 to Q2

How do I answer these questions?

- Did my school do better?
- Did my teachers do better?
- Did my students do better?

What major variable needs to be considered when comparing two different test with similar standards?

24

Difficulty

Assessment	Q1 Mean	Q2 Mean	Q2 - Q1
ELA2	45.85%	58.65%	12.80%
ELA3	47.24%	34.41%	-12.83%
ELA4	42.52%	49.67%	6.05%
ELA5	53.97%	55.12%	1.55%
ELA6	48.79%	49.70%	-0.09%
ELA7	44.45%	46.18%	1.73%
ELA8	49.48%	51.92%	2.04%
ELA9	59.11%	48.10%	-11.01%
ELA10	51.20%	56.10%	4.91%
MATH2	54.97%	51.02%	-3.95%
MATH3	47.24%	53.10%	5.86%
MATH4	58.76%	60.87%	2.10%
MATH5	44.18%	49.62%	5.42%
MATH6	38.41%	39.66%	1.25%
MATH7	32.75%	31.42%	-1.33%
MATH8	31.55%	36.80%	5.22%
ALG1	32.69%	35.47%	2.78%
ALG2	26.86%	24.66%	-2.20%
GEO	25.88%	33.66%	7.72%

When comparing tests for growth you must do a within grade comparison (School to District on a given assessment) or use performance bands because the tests may vary slightly in difficulty.

Cut scores determine performance levels. Cut scores are adjusted to compensate for difficulty.

25

Cut Scores account for Difficulty

What is the best way to compare my student's or classes performance from Q1 to Q2?

26

Pivot Table Report:

Purpose: Evaluate the performance band movement of students from Q1 to Q2 Benchmarks.

Questions you may consider which you can evaluate through this report?

- *See Pivot Table Activity in SharePoint

27



28



29



30

Create a New Pivot Table Report

1. Based on the selected criteria, a number of assessments will appear in the Assessment Search Results box on the left.

2. Click on two assessments to compare. The order in which you select the assessments is important. The first assessment should be from Q1, while the second Q2. Click on the red "X" box to start over.

31

View the New Pivot Table Report

Once the data sets have been selected and you are ready to view the pivot table report, click **Run** to see the report. Click on **Save** to save your data in the Report Manager. Click on **Save and Run Report** to save, view, and store the report in the Report Manager. However, you must give the report a name in order to save it.

Click **Save and Run**

32

Give Your Report a Unique Name

Name your report and then click **Save and Run**

33

Understanding the Pivot Table

Color coding is different from what you might normally attribute to performance. See legend

Legend: Exceeding (Red), Meeting (Yellow), Pivoting (Green), Needs (Blue)

Linear View:

	1516 TUSD.ELA.07 Q2Benchmark		Proficient		Highly Proficient		Totals	
	N	%	N	%	N	%	N	%
1516 TUSD.ELA.07 Q2Benchmark	222	87.7%	200	90.1%	22	9.9%	242	90.1%
1516 TUSD.ELA.07 Q2Benchmark	246	86.6%	226	91.9%	20	8.1%	266	91.9%
1516 TUSD.ELA.07 Q2Benchmark	238	83.6%	215	90.3%	23	9.7%	261	90.3%
1516 TUSD.ELA.07 Q2Benchmark	211	77.7%	192	91.0%	19	9.0%	231	91.0%
Totals	1087	86.4%	985	90.6%	102	9.4%	1187	90.6%

34

Pivot Table Report – By Student

To view student level data in any column, click on the underlined number.

Click on the underlined number to see the students in this group.

	1516 TUSD.ELA.07 Q2Benchmark		Proficient		Highly Proficient		Totals	
	N	%	N	%	N	%	N	%
1516 TUSD.ELA.07 Q2Benchmark	<u>222</u>	87.7%	200	90.1%	22	9.9%	242	90.1%
1516 TUSD.ELA.07 Q2Benchmark	<u>246</u>	86.6%	226	91.9%	20	8.1%	266	91.9%
1516 TUSD.ELA.07 Q2Benchmark	<u>238</u>	83.6%	215	90.3%	23	9.7%	261	90.3%
1516 TUSD.ELA.07 Q2Benchmark	<u>211</u>	77.7%	192	91.0%	19	9.0%	231	91.0%
Totals	<u>1087</u>	86.6%	985	90.6%	102	9.4%	1187	90.6%

35

Using Filters – Select Teacher/Period

The default data included in this report for a school level user will include the entire school.

You may update your report by selecting one or more teachers from the teacher drop down filter.

36

Using Filters- Select Demographic

You may update your pivot table to display data for specific subgroups.

1. Click the **Filter Students** Button
2. Click **More** to filter by the below categories
3. Click **Apply** after selecting your criteria

37

Read the Pivot Table Report - Summary

In the summary view across the top are the three color-coded categories: Rising, Maintaining, and Decreasing. Along the left side are the performance levels, as set by the assessment creator.

View: **Detail** **Summary**

Key: ■ Decreasing ■ Maintaining ■ Rising ■ Totals

Click **Summary**

		Rising		Maintaining		Decreasing	
		#	%	#	%	#	%
1516 TUSD ELA 07 Q2Benchmark		350	11.2%	222	24.4%	0	0.0%
Minimally Proficient		222	6.0%	132	4.9%	150	6.7%
Partially Proficient		150	3.4%	238	24.7%	289	13.9%
Proficient		0	0.0%	87	2.0%	82	2.7%
Highly Proficient		0	0.0%	0	0.0%	0	0.0%
Totals		814	21.1%	1580	46.6%	861	22.2%

38

Pivot Table Activity:

Complete *How Are Our Students Improving* (8-10 min)

39

Gallery Walk Activity: (10 min)

Discuss with your table your answers to *How Are Our Students Improving?* specifically question 3-

"Working with student's teacher(s), describe the action steps you would like to take to help move these students to proficiency":

At your table and using the chart paper, identify specific strategies and actions that may be effective in restoring proficiency for the students that fell performance bands.

40

Resource Page

[How to create a PivotTable](#) - available through the intranet for Teachers

[Student Assessment Information](#) (version 1.0)

41