

Objective:

By the end of this session, I will demonstrate my understanding of the MTSS system by describing the components and explaining how to implement them.

Self-Reflection

- What does quality Tier 1 instruction look like?

What is MTSS?

- A multi-tiered framework designed to maximize achievement for all students
- Focuses on outcomes through the systematic gathering of data to guide educational decisions
- Educational process which benefits all students, not just a system to categorize and refer students for Exceptional Education testing and qualification

Core Principles:

- We can effectively teach all children
- Intervene early
- Use a multi-tiered model of service delivery
- Use a problem-solving method to make decisions within a multi-tiered model
- Use research-based, scientifically validated interventions and instruction
- Monitor student progress to inform instruction
- Use data to make decisions
- Use assessment in screening, diagnosis, and progress monitoring

Core Principles:

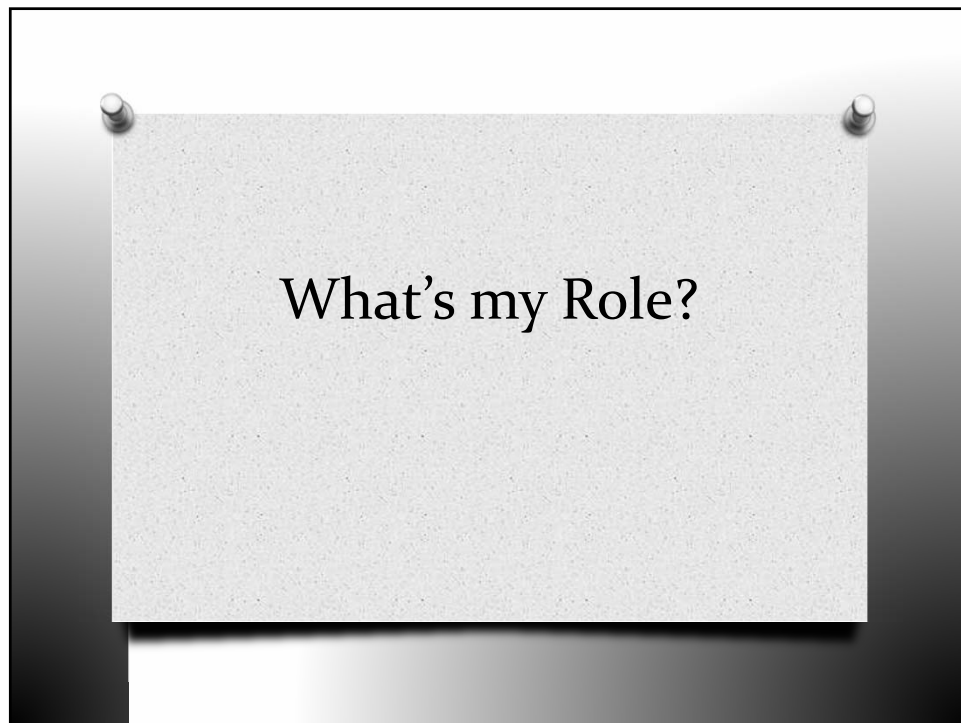
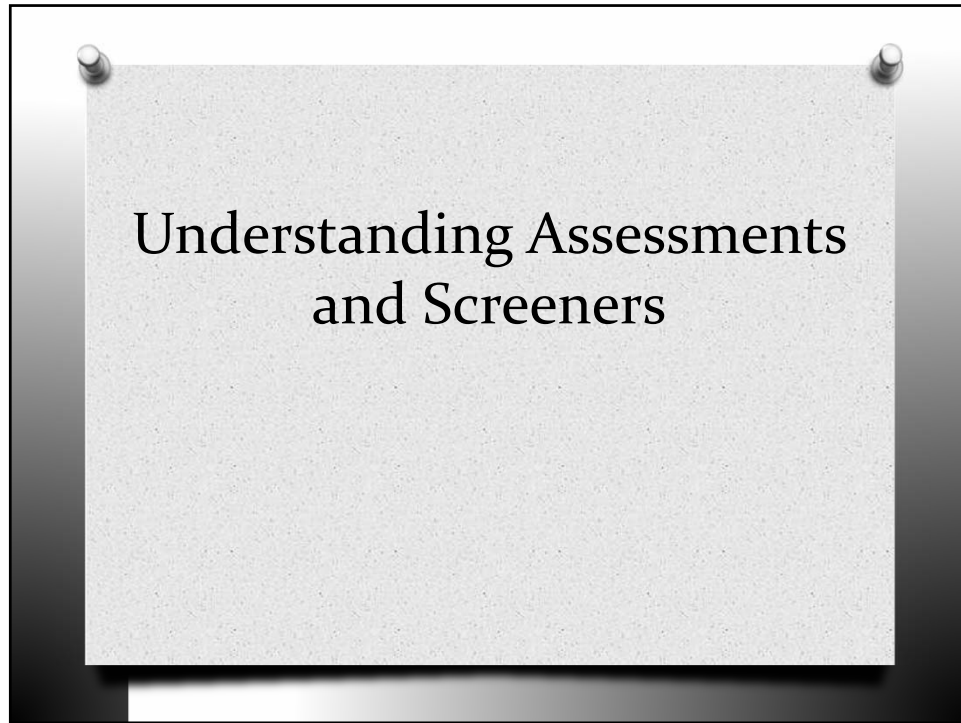
- Use a multi-tiered model of service delivery
- Use a problem-solving method to make decisions within a multi-tiered model
- Use assessment in screening, diagnosis, and progress monitoring

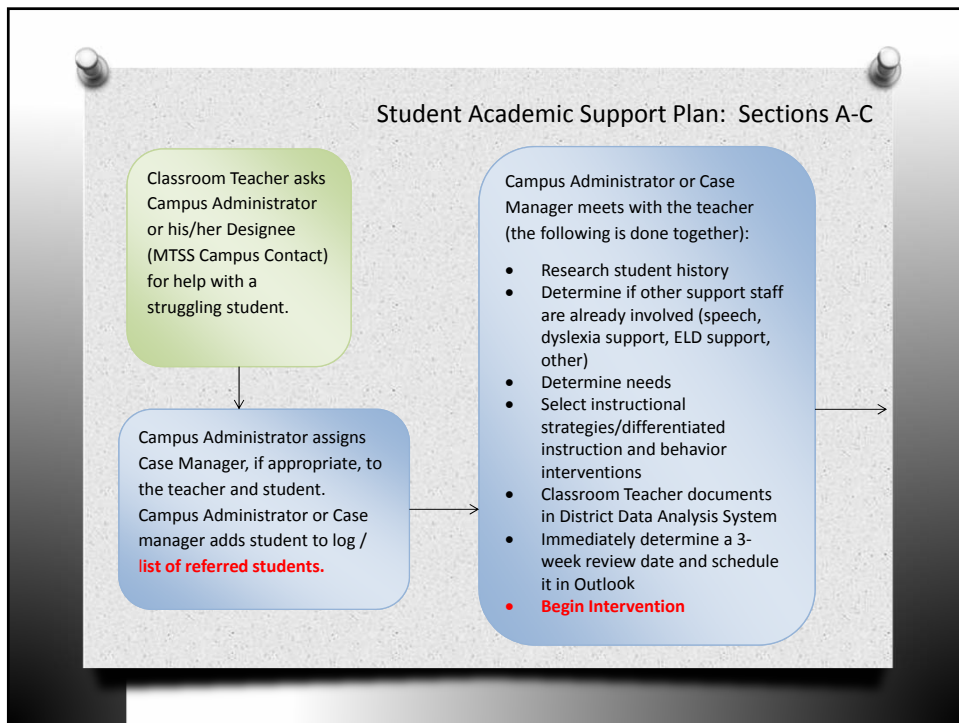
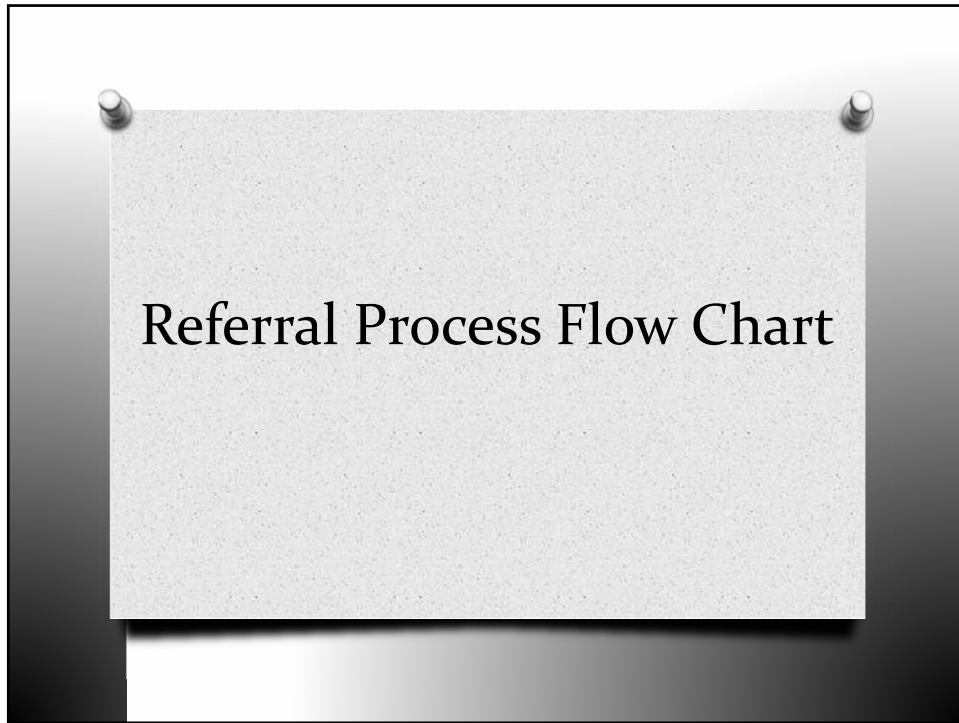
Multi-Tiered Model Academic and Behavior

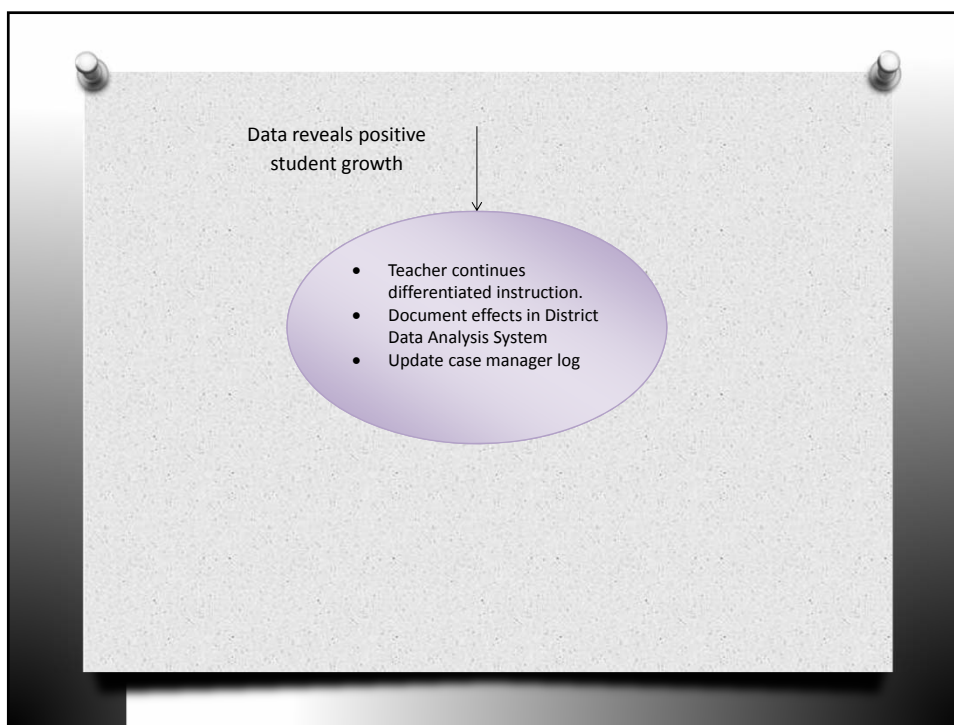
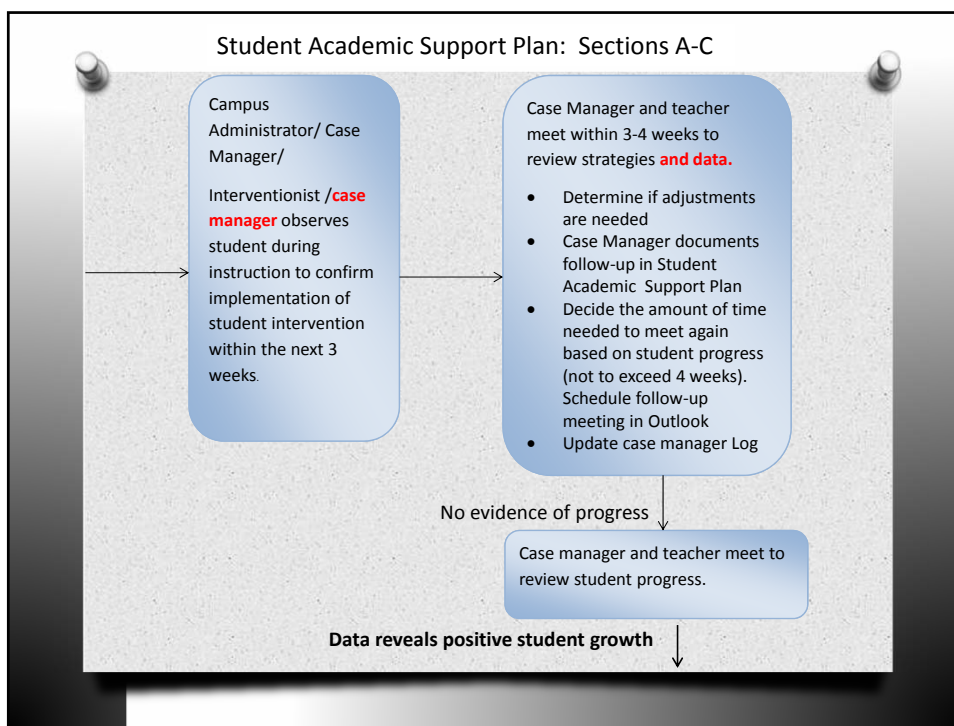
Tier 3
5% of students

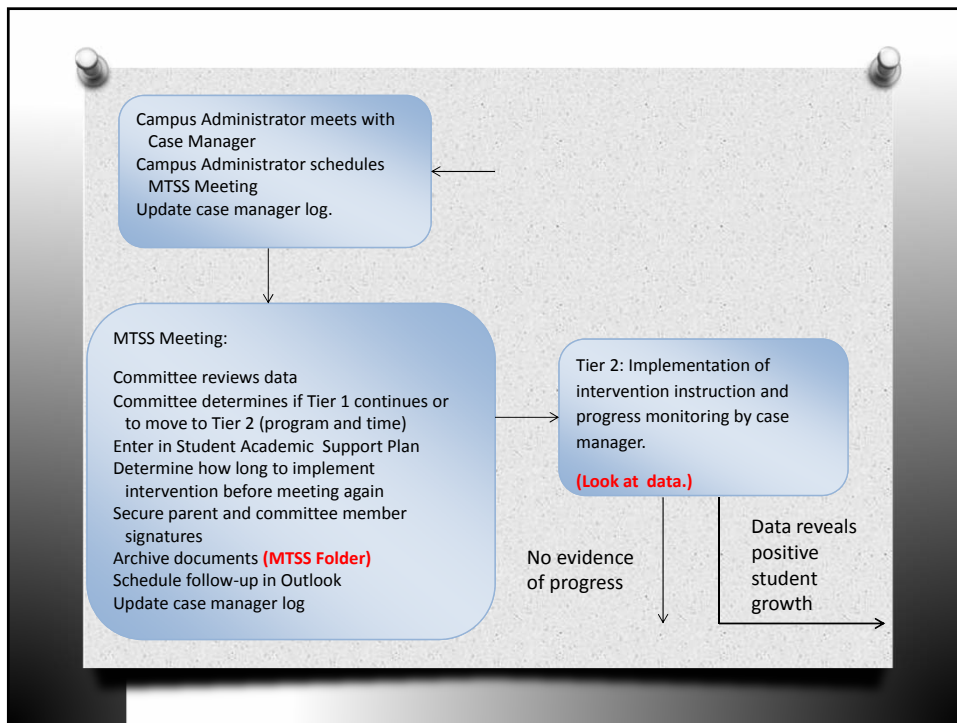
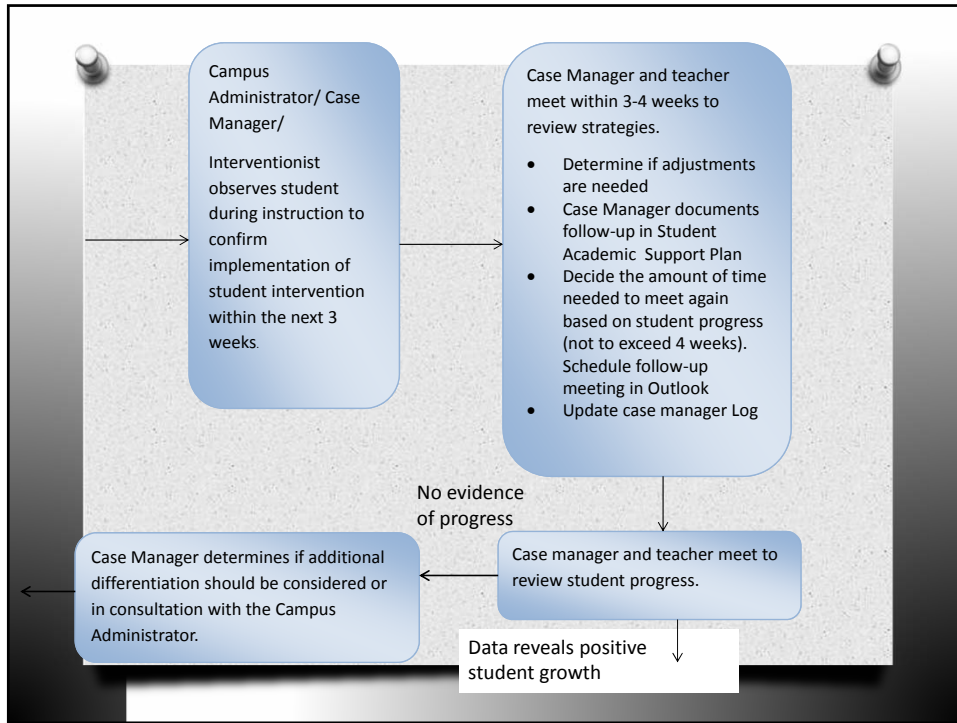
Tier 2
15% of students

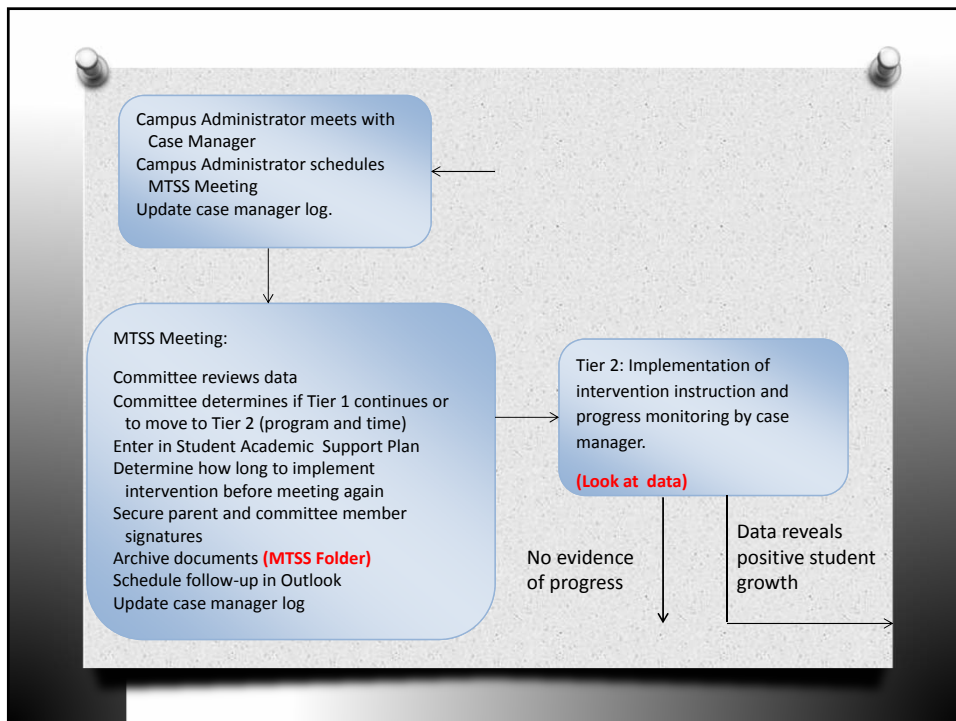
Tier 1
80% of students

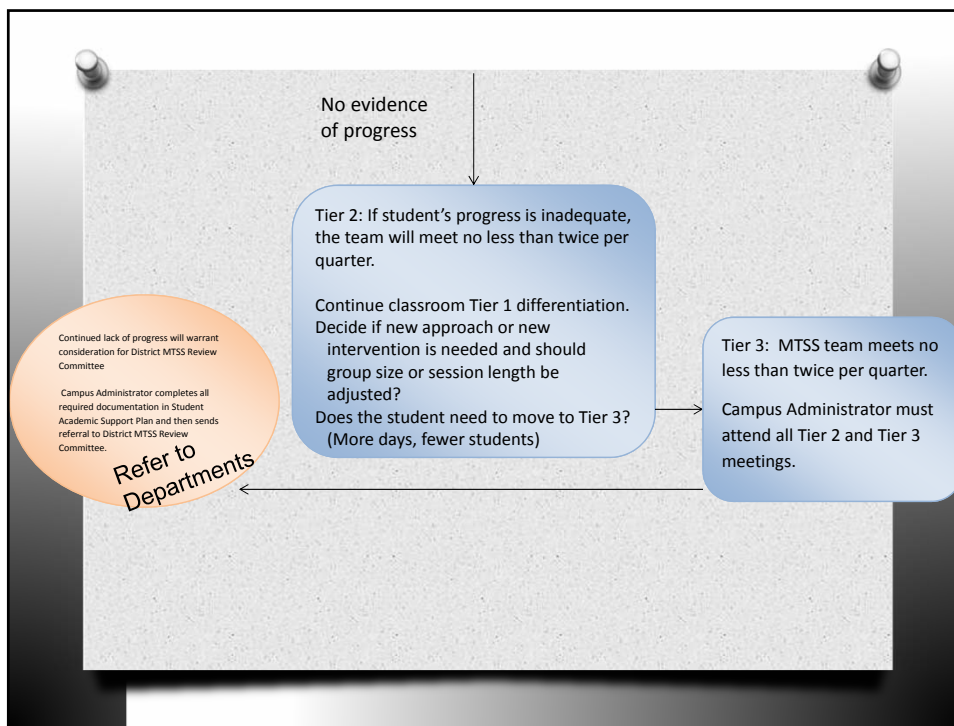












Next Steps

Reflection

- Explain the value of MTSS in a 12 word summary.