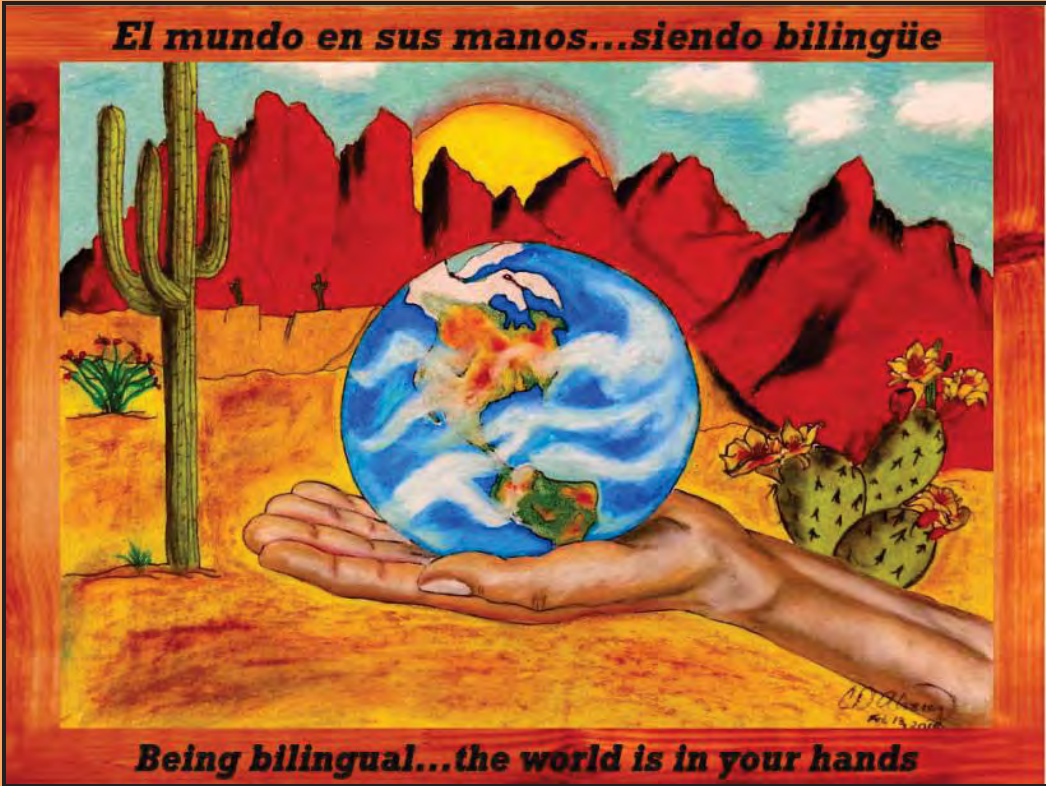


TUCSON UNIFIED SCHOOL DISTRICT



Two-Way Dual Language Language Acquisition Department



GLOBAL OUTLOOK...

Prepare our youth with powerful, communicative and creative bilingual/biliterate tools to effectively connect with the world.



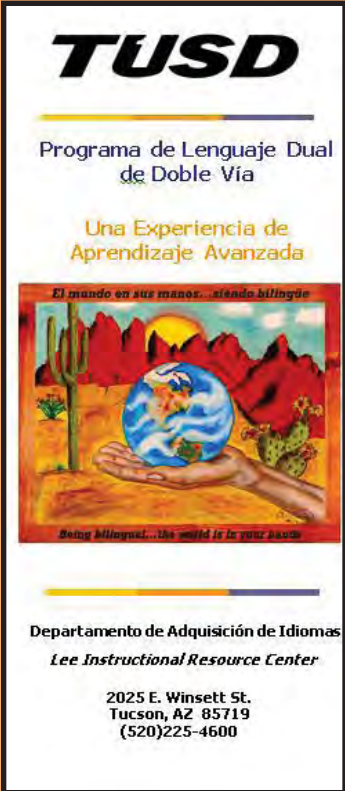
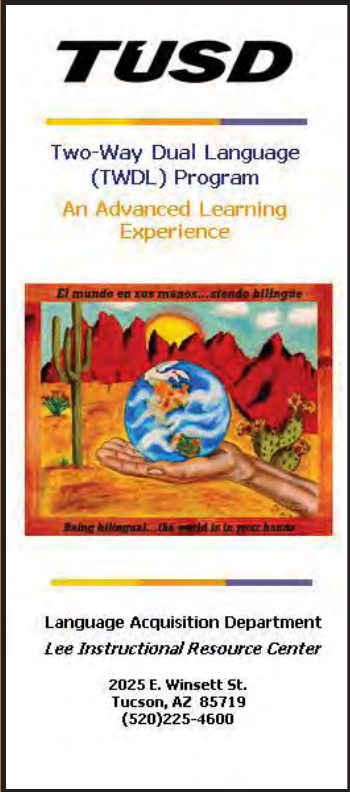
420 million people worldwide speak Spanish as a first language



By 2050, the United States will be home to approximately 100 million people who speak Spanish



TUSD TWDL BROCHURE



In the brochure, you will find general information and a description of the model.



TWDL PROGRAM GOAL

**To provide instruction for
cognitive and linguistic development
in two languages for all students
who enroll with the educational goals of
bilingualism, biliteracy and biculturalism.**

Major goal of the TWDL Program



ADVANCED LEARNING EXPERIENCE

In following with our goal of bilingualism, biliteracy and biculturalism.



TWO-WAY DUAL LANGUAGE MODEL

**Two Way Dual
Language
(TWDL)= Balanced
Number
of
Two Groups
of
Students**

**Native Speakers of
Spanish or Other
“Target” Language**

**Native English
Speakers**

At this time, our targeted languages are Spanish and English.

2014-2015 PARTICIPATING SITES

Cycle I

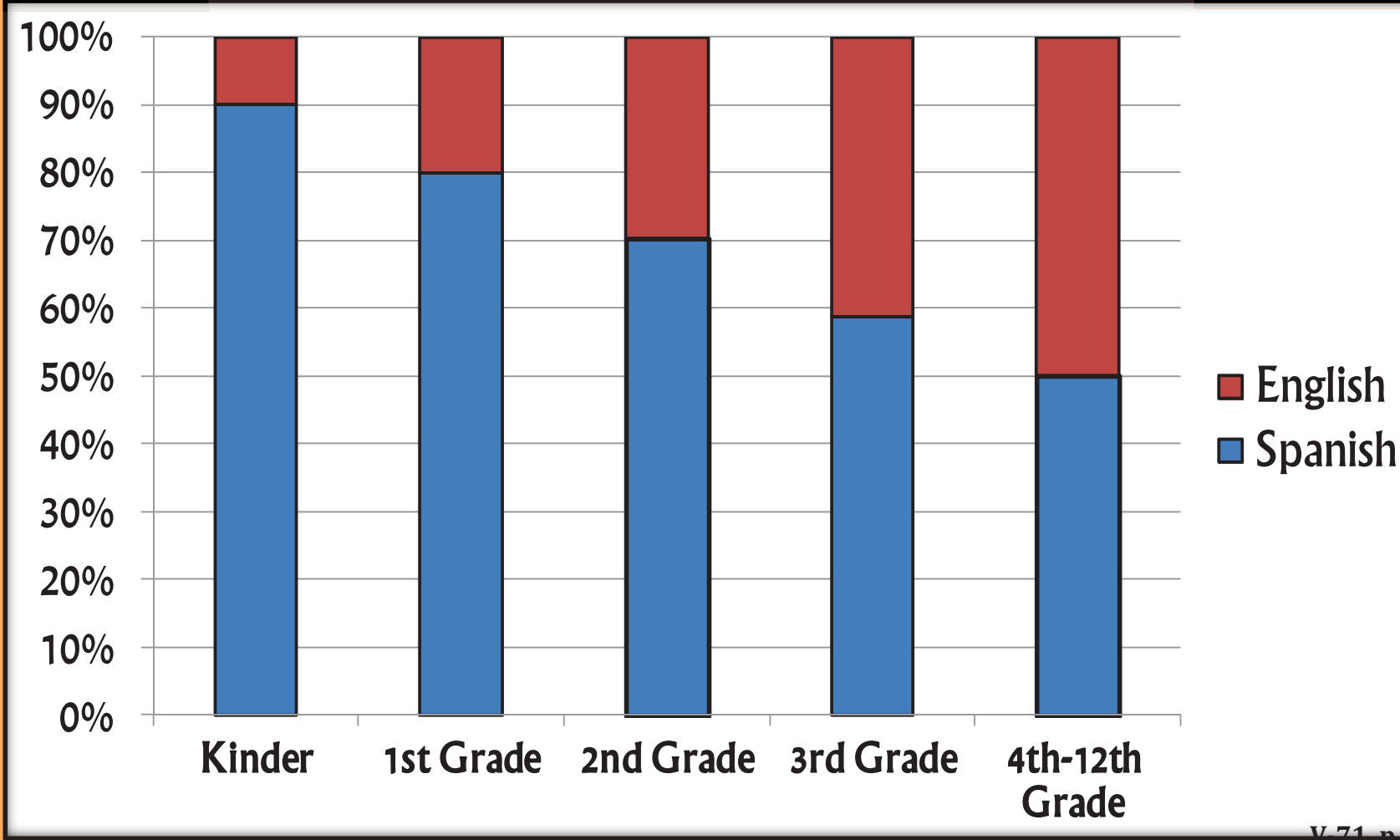
K-2, 6th, 9th

**All other grades will continue with a 50/50 model*

The Two-Way Dual Language model will be phased in Cycles with Cycle I beginning in school year 2014-2015.

- Davis Bilingual Magnet
- Grijalva
- Hollinger
- McCorkle (K-2)
- Mission View (K-3)
- Roskruge Bilingual Magnet (K-8)
- Van Buskirk
- White
- Pistor
- Pueblo

TWDL K-12 LANGUAGE of INSTRUCTION





Reading/Lectura



Writing/Escritura



Vocabulary/ Vocabulario



Grammar/ Gramática



[] period [?] question mark [,] Comma [!] exclamation (ELD)

Interjections
 Hooray! Yikes!
 Wow! Oh boy!

Contraction Words
Verb Two Words
am - I am - I'm
have - I have = I've
is - he is = he's
 - it is = it's
 - she is = she's

Compound Sentences
 Put two sentences together use a comma

Connecting Words
 and, but, or
 Ideas Alike Shows difference Choice between 2-3 Ideas

5 16 17 18 19 20 21 22 23 24 25 26 27 28 29 30

Diptongo

Es la unión de dos vocales, una fuerte y una débil o dos débiles, en una misma sílaba.

a e
 i u
 o

VOCALES FUERTES VOCALES DEBILES

bai-le au-men-to vio-lín cua-les

5 26 27 28 29 30 31 32 33 34 35 36 37 38 39 40 41

La sílaba

La sílaba es el conjunto de letras que se pronuncia con un solo golpe de voz.

árboles

ár - bo - les

antepenúltima penúltima última

VOCALES FUERTES VOCALES DEBILES

ba - úl le - er nu-man-os

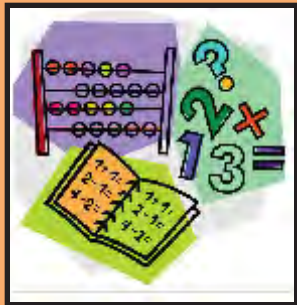
PALABRAS AGUDAS

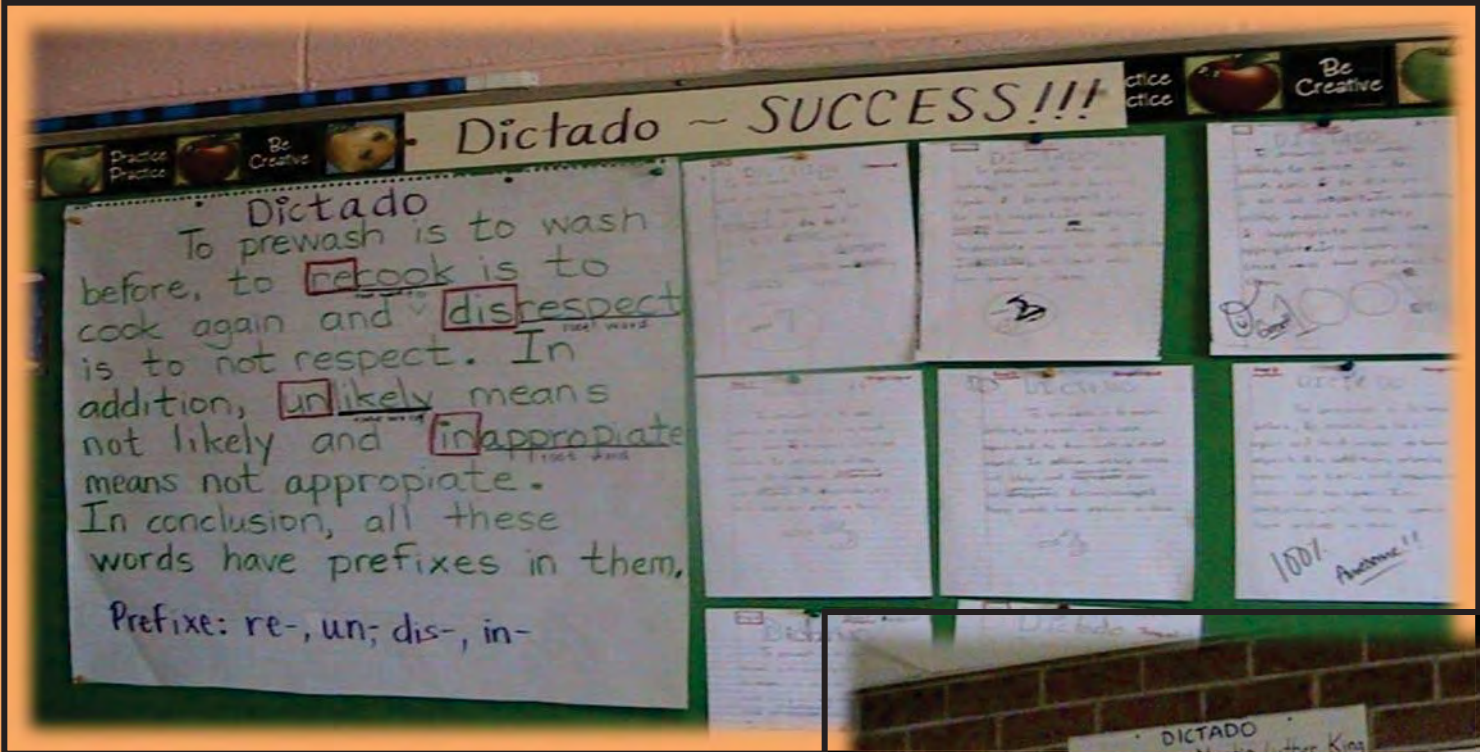
Llevan la pronunciación en la última sílaba. Se acercan a la terminación consonante.

V-71, p. 11



Math/Science Matemáticas/ Ciencia





Dictados

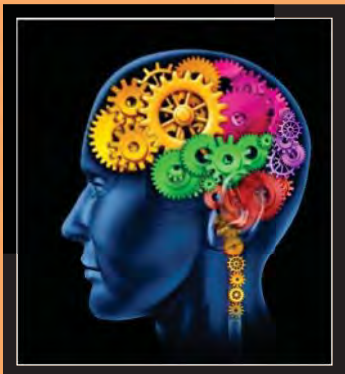




Fine Arts/ Bellas Artes



THOMAS AND COLLIER



Surpasses achievement when learning only in one language.

Students from diverse backgrounds

Respect & value each other

Learning through two languages

Ensures cognitive development and flexibility

Expands and enhances students' thinking skills

**“El mundo en sus
manos...siendo bilingüe.
Being bilingual...the world
is in your hands.”**



Thank You

Questions?

<http://www.tusd1.org/resources/twdl/index.asp>